

1. Schweizer Finale

21. November 2015

Multimedia Test

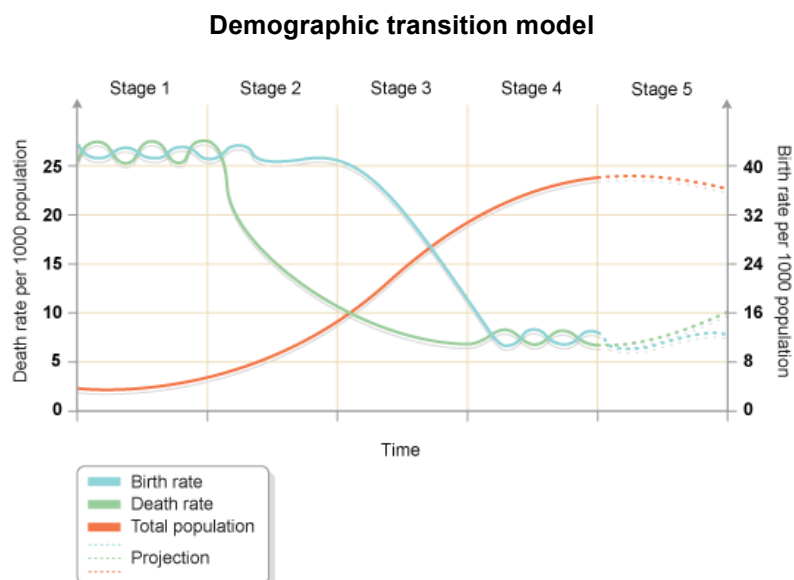
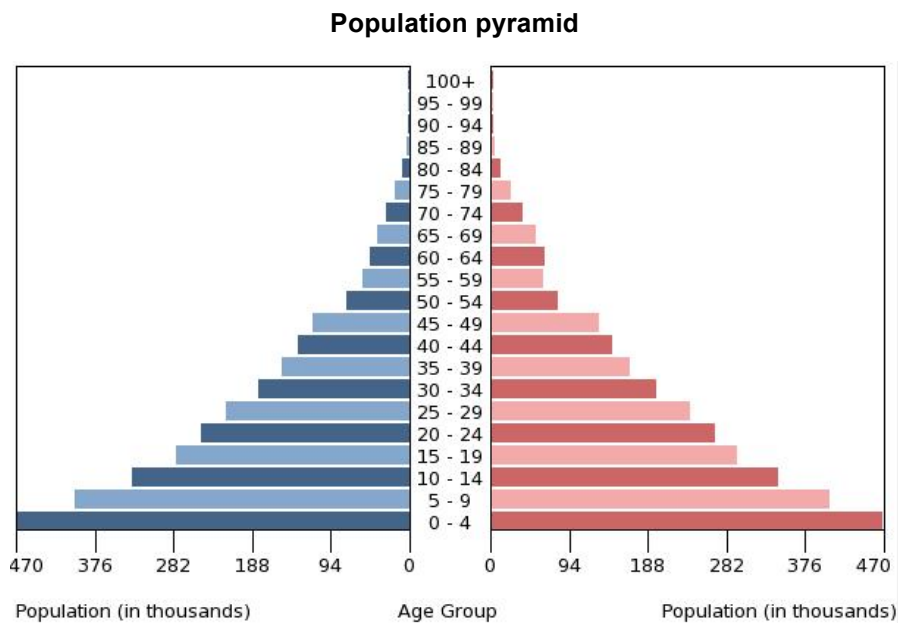
Questions Booklet

- Do NOT open the booklet before instructed to do so by a supervisor.
- Write your answer on the separate **Answer Sheet**.
- Only the answer sheet will be marked.
- Give only ONE answer to each question.

Question 1

Where would you place this population pyramid in the demographic transition model, and which country does it represent?

- a) Stage 1: Indonesia (2014)
- b) Stage 2: Sierra Leone (2014)
- c) Stage 3: Norway (2014)
- d) Stage 4: Australia (1960)



Question 2

These are four climate diagrams from European cities around 50° N. Put them into the right order from West to East!

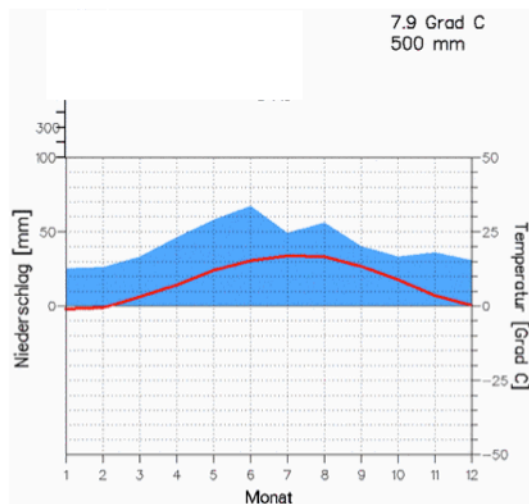
a) A C D B

b) A B C D

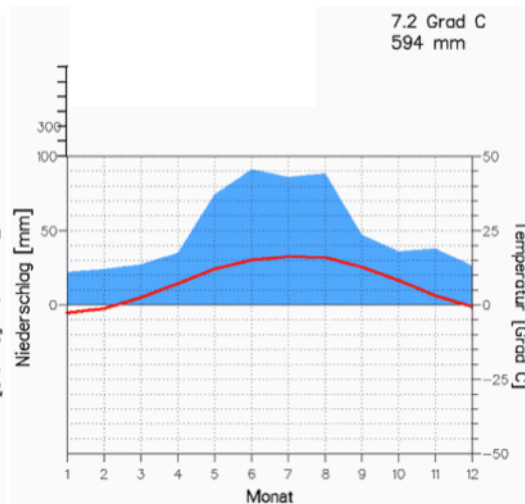
c) D B A C

d) C A B D

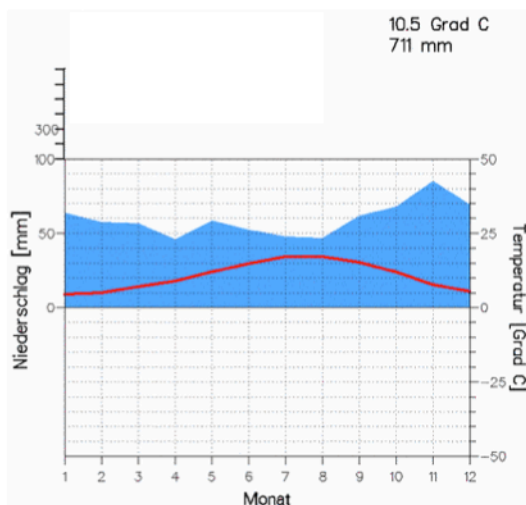
A



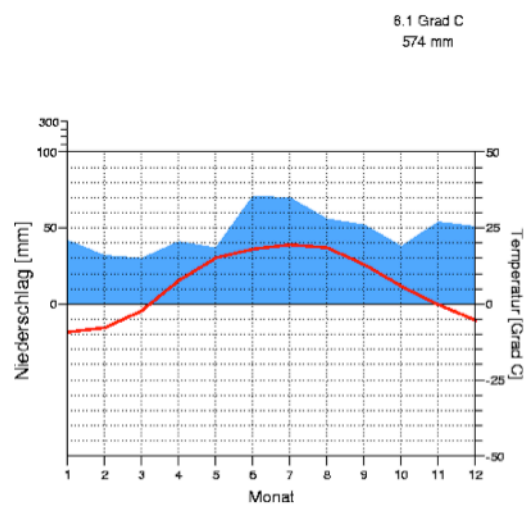
B



C



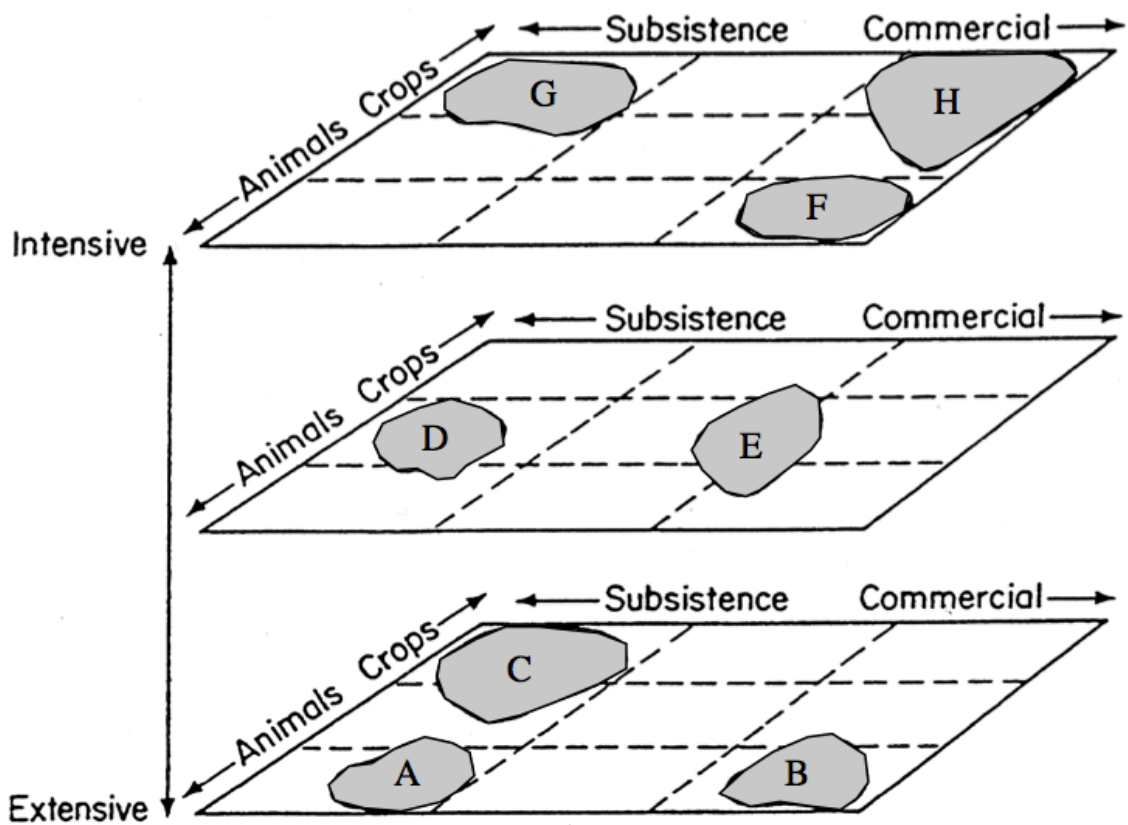
D



Question 3

The diagram shows most of the agricultural systems of the world. Which one represents Shifting Cultivation?

- a) C
- b) G
- c) E
- d) D



Question 4

Which satellite picture shows an Islamic-oriental city?

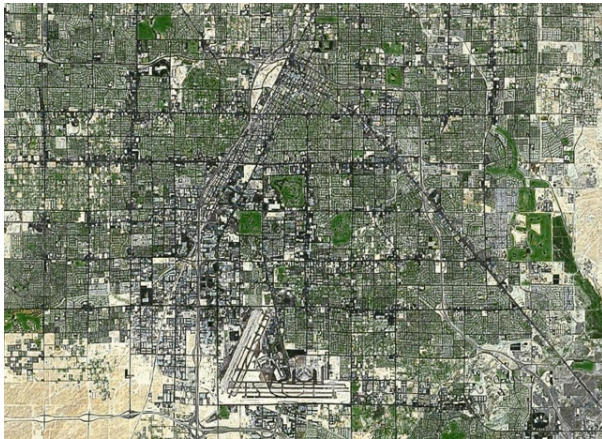
a) 1

b) 2

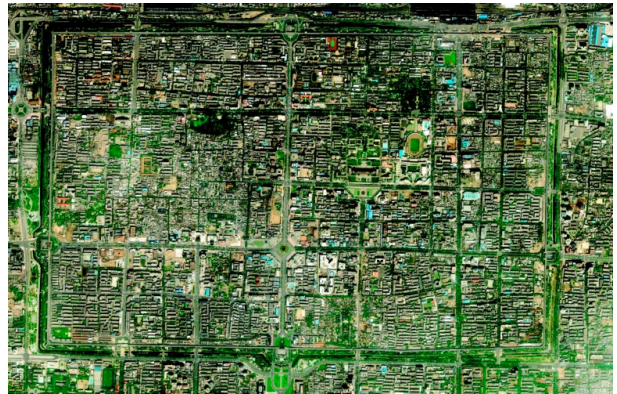
c) 3

d) 4

1



2



3



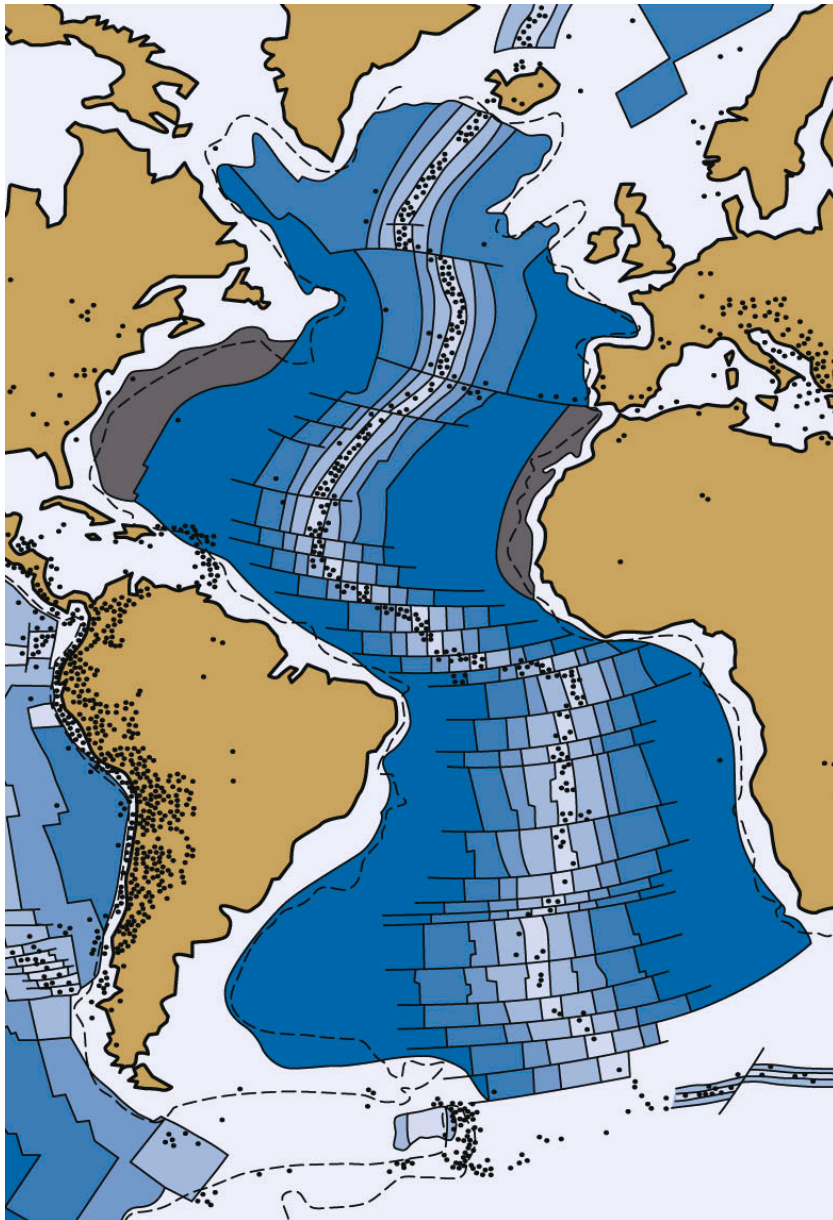
4



Question 5

The blue colour sequence in the figure shown indicates the following:

- a) The temperature of the surface water.
- b) The amount of plankton in the deepwater basins.
- c) The geological age of the ocean floor.
- d) The speed of the Gulf stream, flowing through the Atlantic ocean.



Source: Hasler & Egli 2013, Fig. 3.11

Question 6

Which picture of a tropical cyclone was taken over the Southern Atlantic?

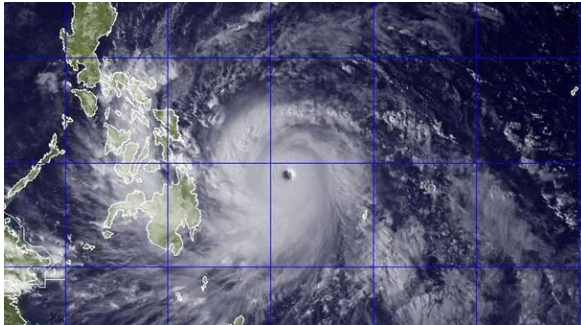
a) A

b) B

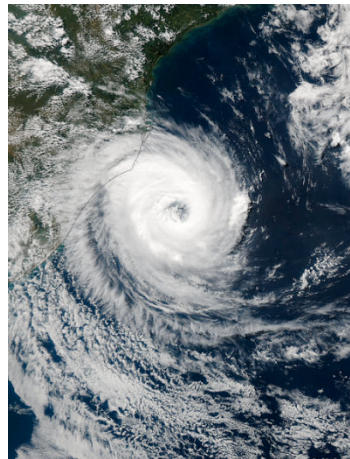
c) C

d) D

A



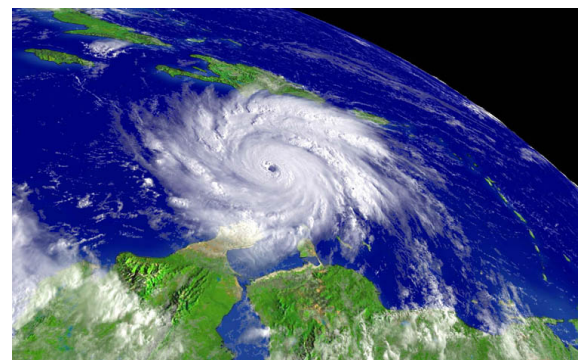
B



C



D



Question 7

This photograph was taken in:

- a) Italy
- b) Malaysia
- c) USA
- d) Argentina

