



**GEOGRAPHY.
OLYMPIAD.CH**
GEOGRAPHIE-OLYMPIADE
OLYMPIADES DE GÉOGRAPHIE
OLIMPIADI DI GEOGRAFIA

5th Swiss Finals

26 October 2019

Multimedia Test

Questions Booklet

- Do NOT open the booklet before instructed to do so by a supervisor.
- Write your answers on the separate **Answer Sheet**.
- Only the answer sheet will be marked.
- Give only ONE answer to each question.

Student number:

Question 1

What type of rock is shown in this picture?

- a) basalt**
- b) limestone**
- c) pyroplastic**
- d) tuff**

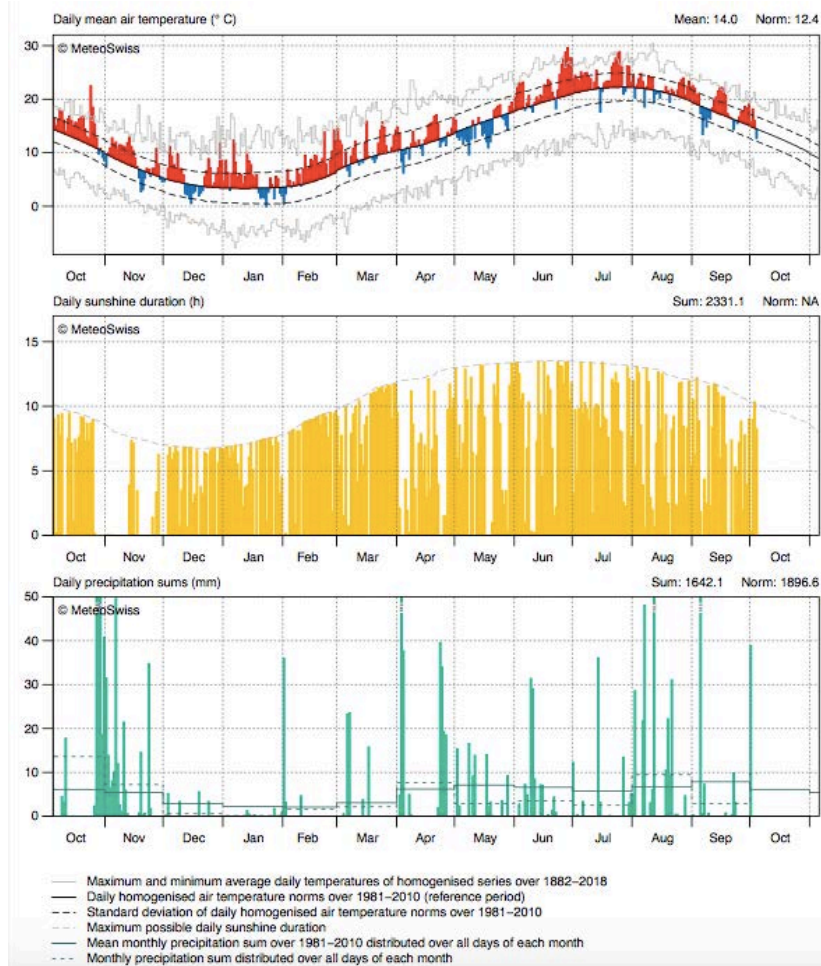


<https://tinyurl.com/y5fs4557>

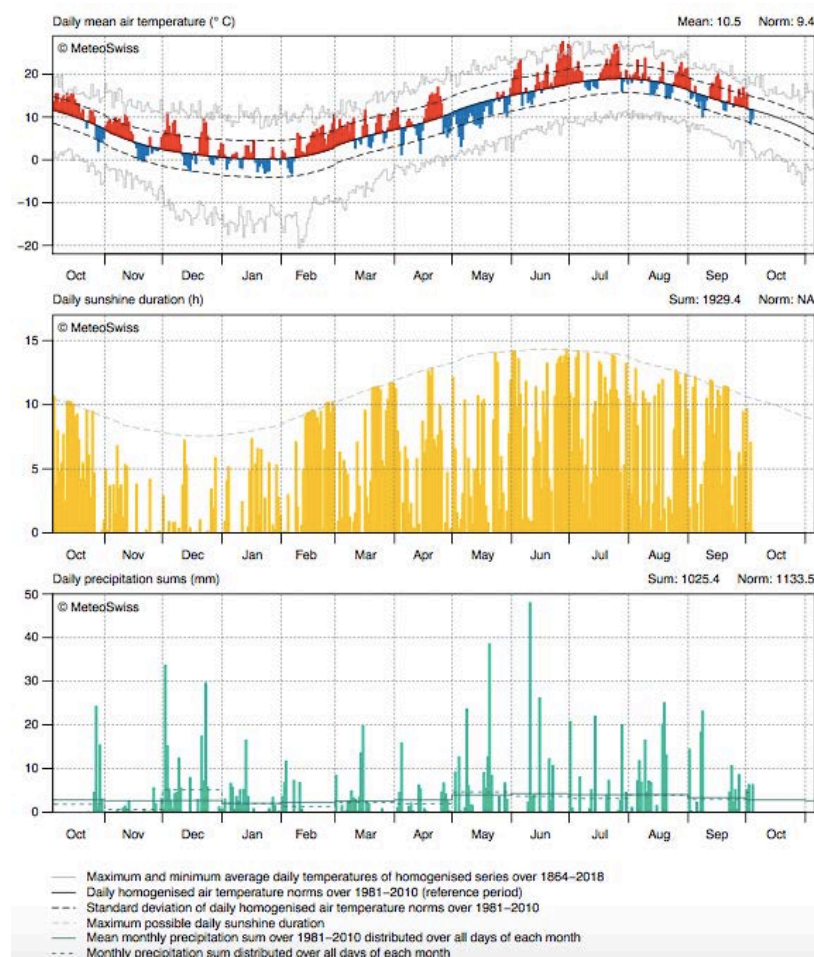
Question 2

These two diagrams show the temperature, sunshine duration and precipitation of the period October 2018 – October 2019 for two cities in Switzerland. Which cities?

1



2



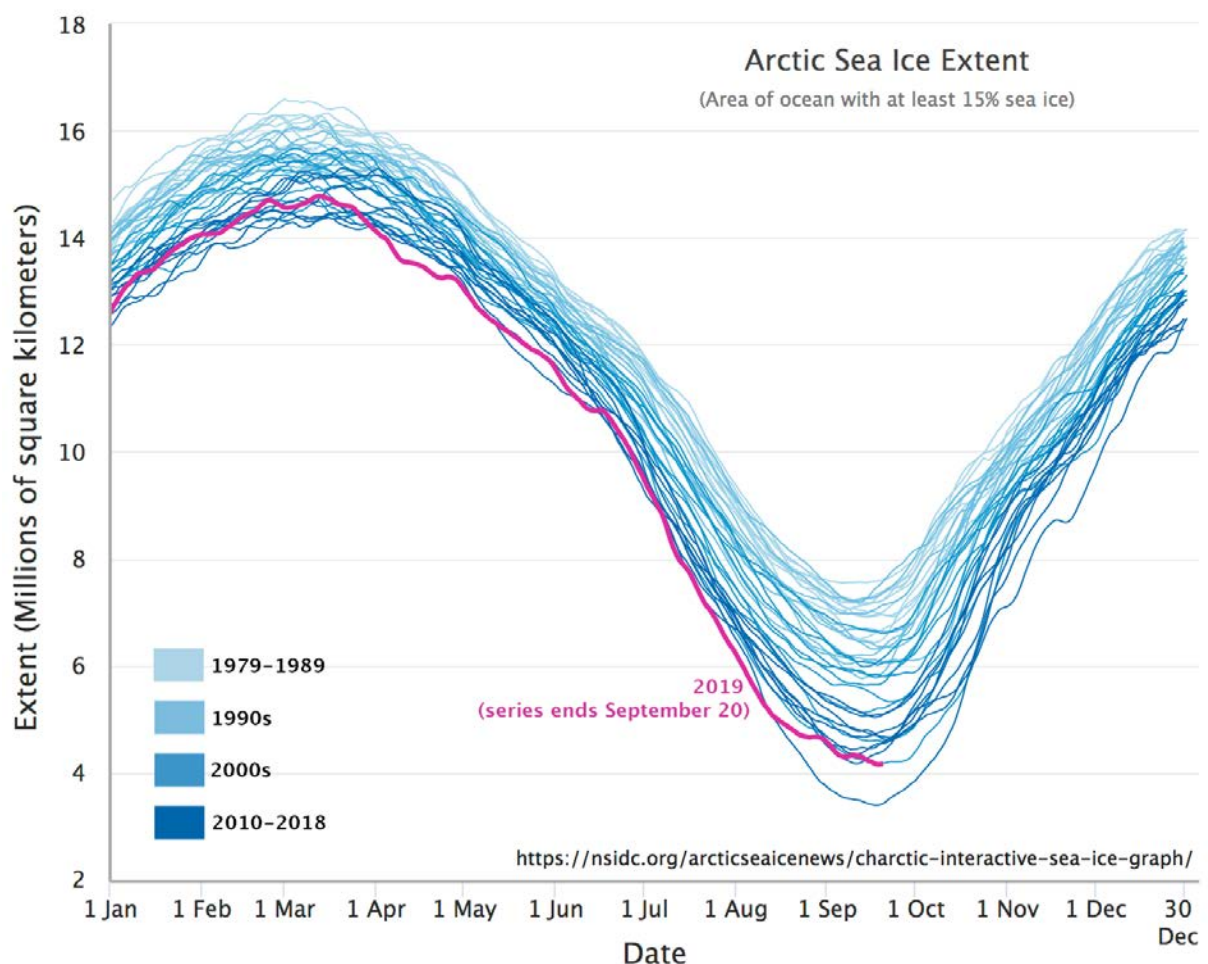
- a)
1. Zürich
2. Bern
- b)
1. Locarno
2. Bern
- c)
1. Locarno
2. Lugano
- d)
1. Bern
2. Basel

Source: Federal
Office of
Meteorology and
Climatology
MeteoSwiss

Question 3

Mark the statement that is correct according to the graphic.
Arctic sea ice extent...

- a) ... has never been lower than in April 2019.
- b) ... decreases from March to September between 1979-1989 about 75%.
- c) ... is decreasing more rapid every decade since 1979-1989.
- d) ... might hit zero in 20 years in September.



<https://tinyurl.com/y3m5o3hr>

Question 4

The picture shows an eruption of the volcano Raikoke on the Kuril Islands south of Kamtchatka Peninsula.

Which effect is responsible for the flat top of the ash cloud?

- a) The tropopause works like a lid. Gases cannot cross it.**
- b) The density of the gas cloud equals the density of the air.**
- c) The gravity prevents ash from getting higher.**
- d) Sinking air pushes against the rising cloud.**

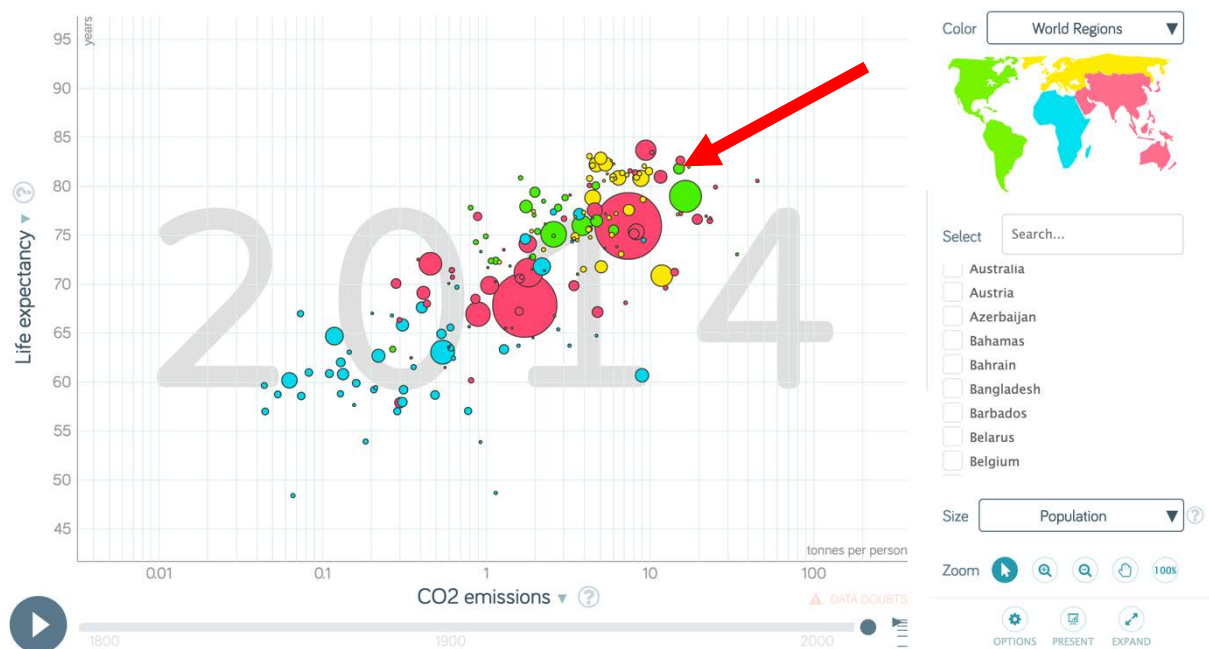


<https://tinyurl.com/y2t6tsep>

Question 5

Which country is depicted on the arrow's tip?

- a) Canada
- b) Uruguay
- c) Chile
- d) USA

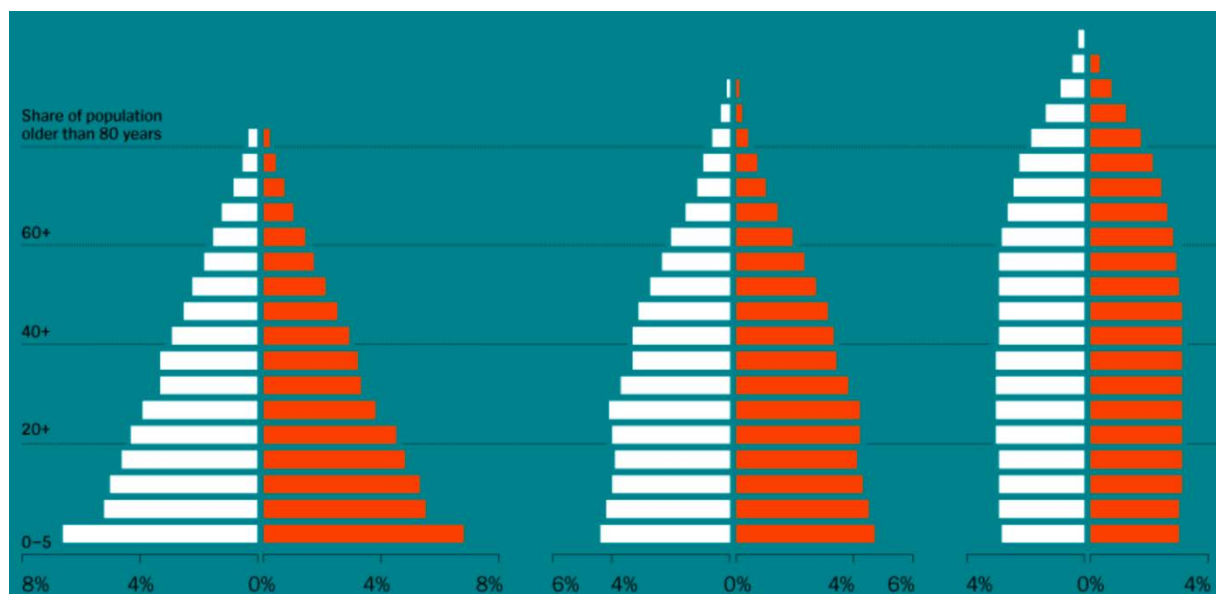


<https://tinyurl.com/yxpb9tfc>

Question 6

The three population pyramids represent 1950, 2015 and 2100 (projection). White represents female, orange male population. Which world region is represented in the graphs?

- a) USA
- b) EU
- c) Africa
- d) world



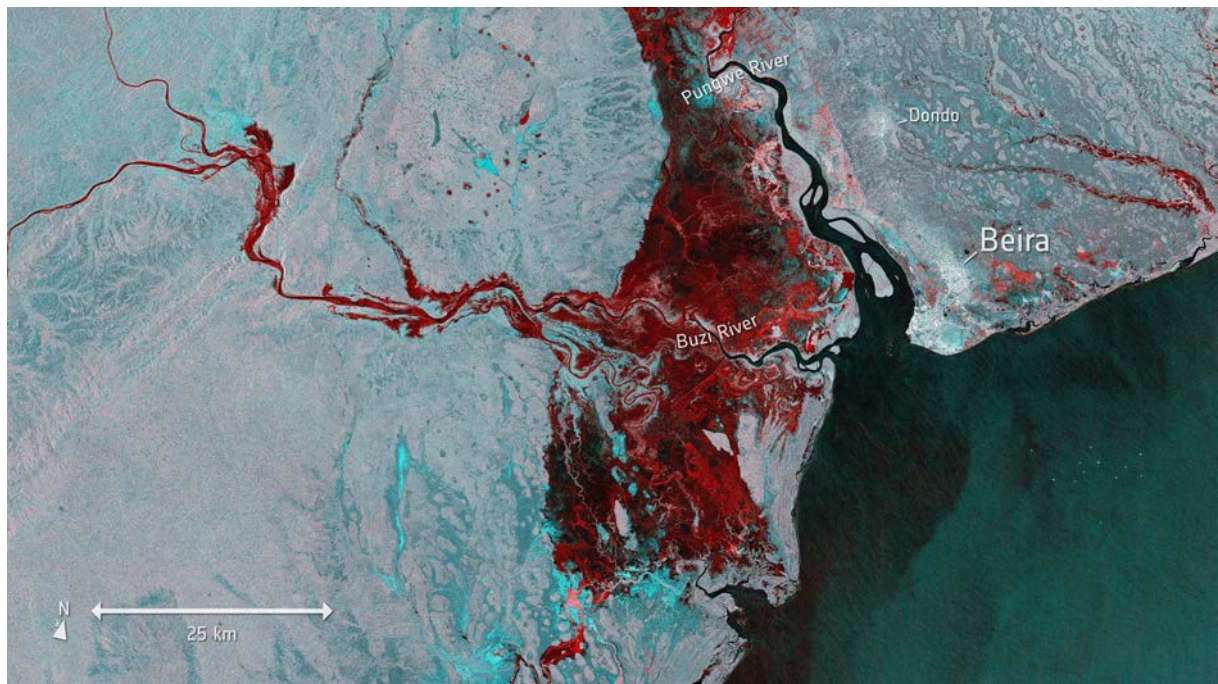
<https://tinyurl.com/yx8h5zf6>

Question 7

The below picture shows Beira in Mosambique. The red area is flooded after Hurricane Idai.

What size is the flooded area approximately?

- a) double Lake Geneva
- b) Lake Zurich
- c) a fourth of Switzerland
- d) Liechtenstein

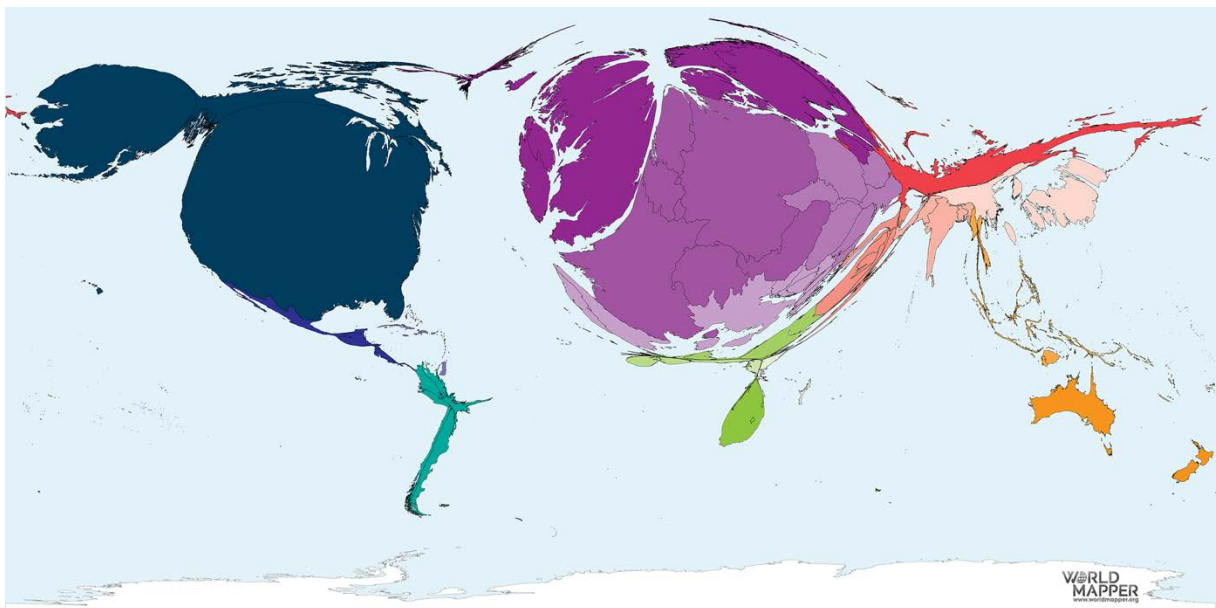


<https://tinyurl.com/y4sebfo5>

Question 8

What is shown in this map?

- a) nobel prize laureates**
- b) ecological footprint**
- c) visitors of “Avengers Endgame” in cinemas**
- d) horses**

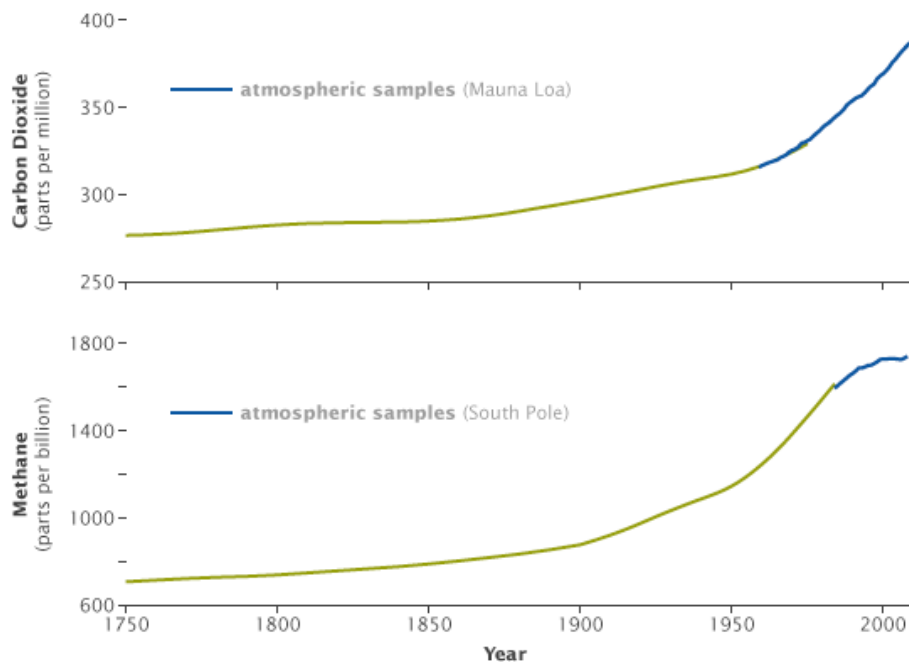


<https://tinyurl.com/yb9sjcqz>

Question 9

The graphs show increases in concentrations of carbon dioxide and methane coincided with the start of the Industrial Revolution in about 1750. The blue line shows direct atmospheric measurements. What could be the data source of the green line?

- a) Cultural archives
- b) Estimation
- c) Paleoclimate archive
- d) Remote sensing

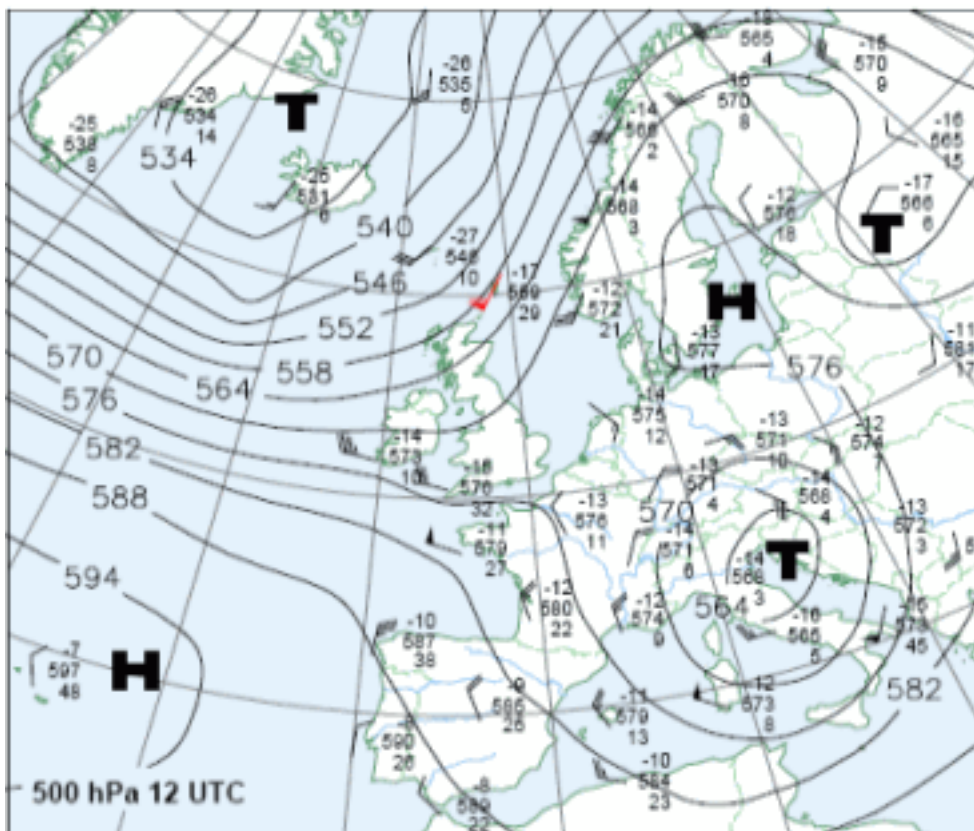


<https://tinyurl.com/yyln5kn8>

Question 10

Describe the weather for Switzerland.

- a) rainfall south side of alps, winds from SE
- b) dry, cloud-free, nearly no wind
- c) rainfall north side of alps, winds from NE
- d) dry, heavy winds from NE



<https://tinyurl.com/yycreev2>

Question 11

The picture below shows the Clock Tower of Corban College, Salem, Oregon, USA. In what direction is the photographer looking?

- a) northwest
- b) south
- c) west
- d) southwest



<https://tinyurl.com/yxwyhocf>

Question 12

What do these people demonstrate for?

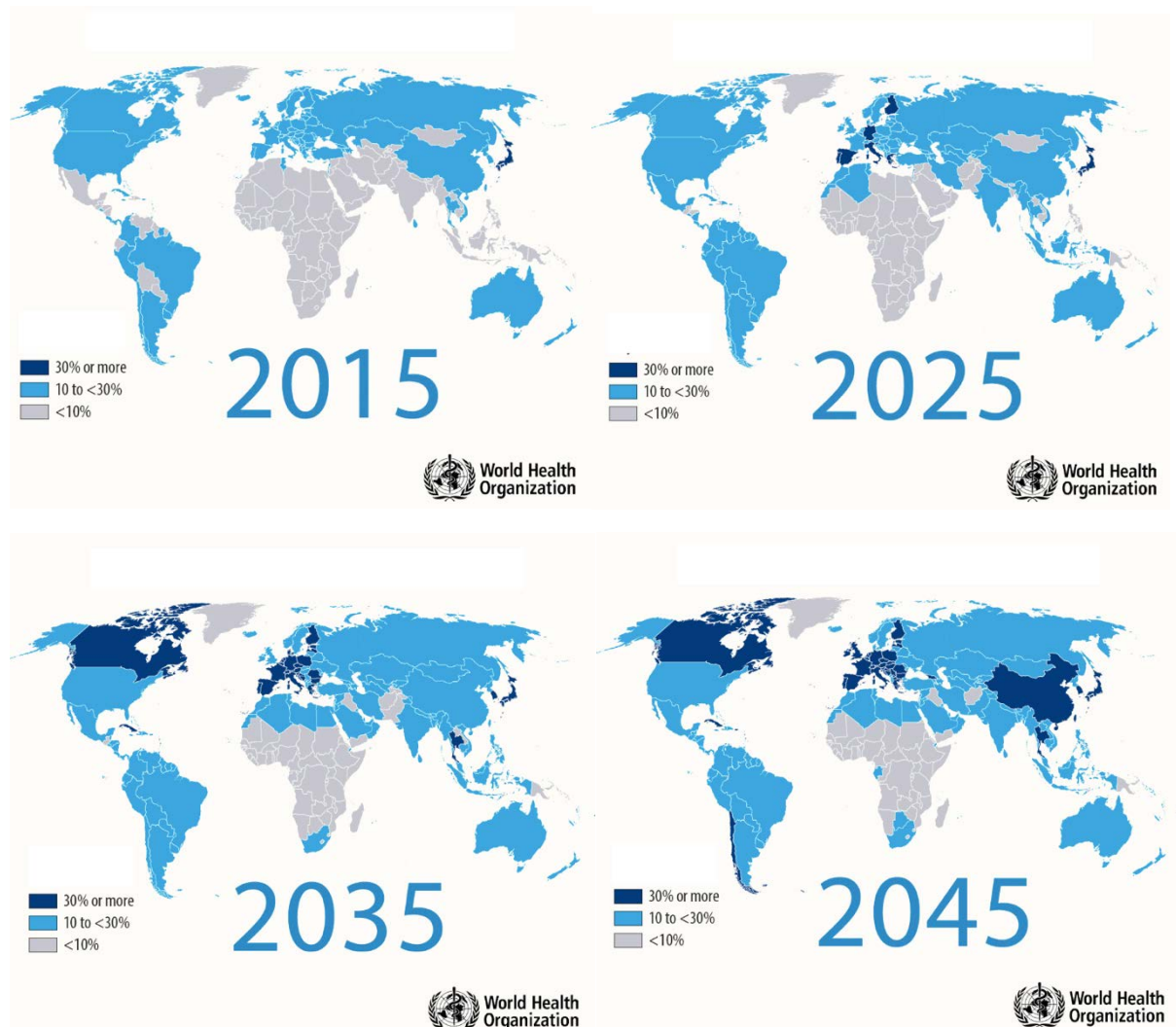
- a) abolition of the death penalty**
- b) more democracy**
- c) gender equality**
- d) climate change**



<https://tinyurl.com/y2je6tal>

Question 13

What could be the title of the maps shown below?



<https://tinyurl.com/y27fp7lo>

- A) The world population is getting older**
- B) More and more people live in cities**
- C) The population becomes more educated**
- D) The gender gap is becoming smaller**

Question 14

What is the topic of the figure below?

- a) urban development
- b) spatial planning
- c) global city awards
- d) sustainable development



<https://tinyurl.com/y4a2oqx3>

Question 15

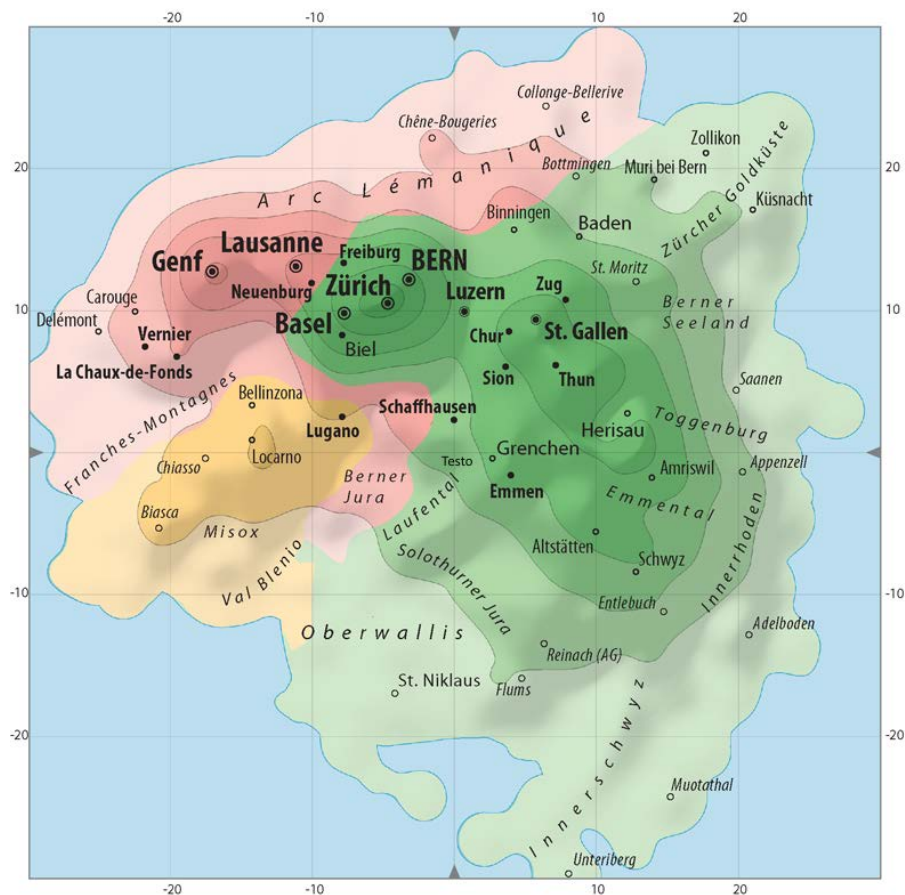
Which topics are visualised by the geographic directions (N, S, W, E) in this map?

a) demographic distribution: (N) female, (S) male, (W) young, (E) old.

b) political distribution: (N) liberal, (S) conservative, (W) left-wing, (E) right-wing.

c) agricultural type distribution: (N) organic, (S) traditional, (W) low production, (E) high production.

tourism type distribution: (N) mass tourism, (S) niche tourism, (W) agro tourism, (E) skiing and hiking (traditional).

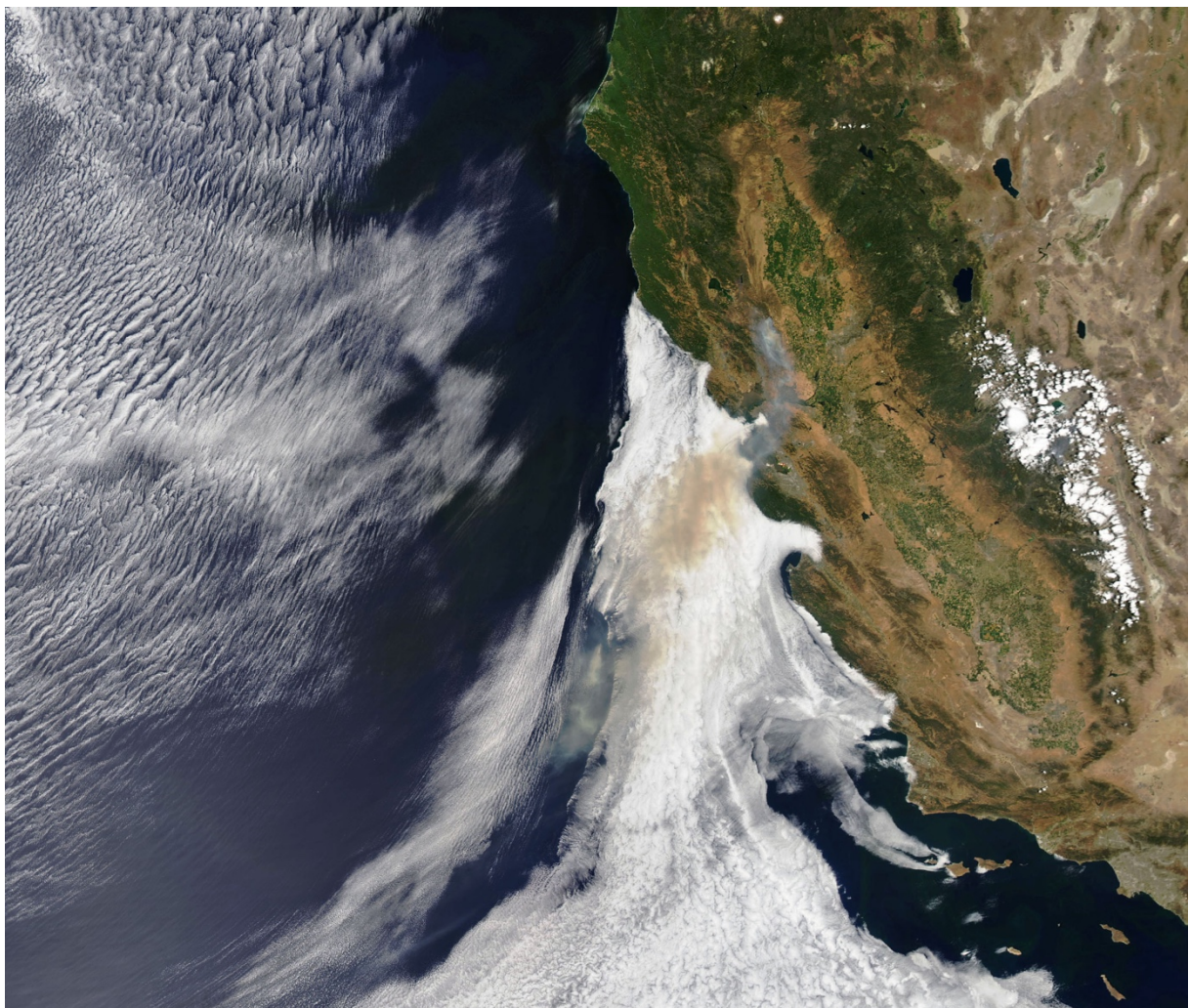


<https://tinyurl.com/yxnrqr9l>

Question 16

What is the direct result of the process shown on the satellite image (taken on the July 1 2018)?

- a) Cold and wet weather on the coast side**
- b) Rise of the sea level**
- c) Strong winds on the southern islands**
- d) The release of carbon dioxide**



<https://tinyurl.com/y6osfs7p>