



**GEOGRAPHY.
OLYMPIAD.CH**
GEOGRAPHIE-OLYMPIADE
OLYMPIADES DE GÉOGRAPHIE
OLIMPIADI DI GEOGRAFIA

5th Swiss Finals

26 October 2019

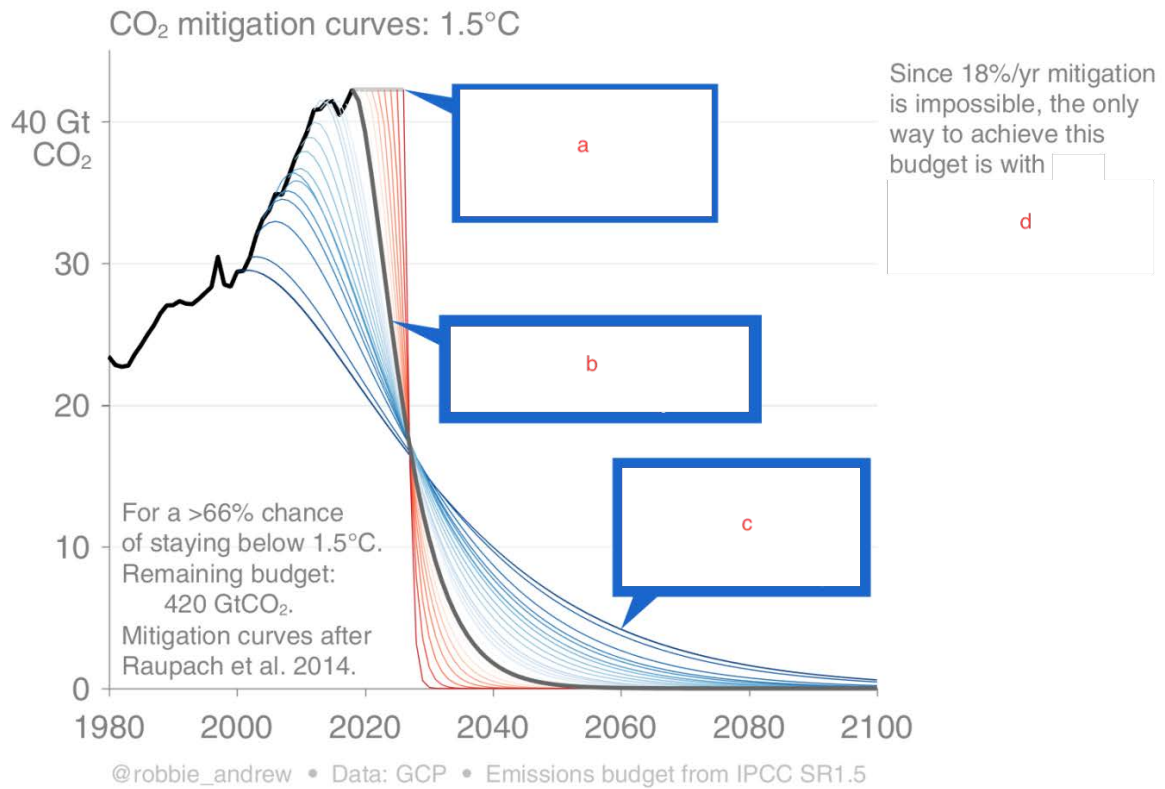
Written Response Test

Questions and Answers Booklet

*Do NOT open the booklet
before instructed to do so by a supervisor.*

Student number:

climate and climate change



1. The graph shows the amount of CO₂ emissions over time from 1980 to 2100 considering the global emission budget according to the IPCC Special Report about a global warming of 1.5 degrees.

Fill in the missing texts in a, b, c and d. (7 marks)

hazards and hazard management



(source: <https://diepresse.com>)

2. a) Describe the picture. (1 mark)

b) Give a scientific explanation for the reasons of what happened here. (3 marks)

resources and resource management

3. Explain the general function of an oil trap. (2 marks)

landforms, landscapes and land use

4. Name four phenomena associated with underwater divergent plate borders. (2 marks)

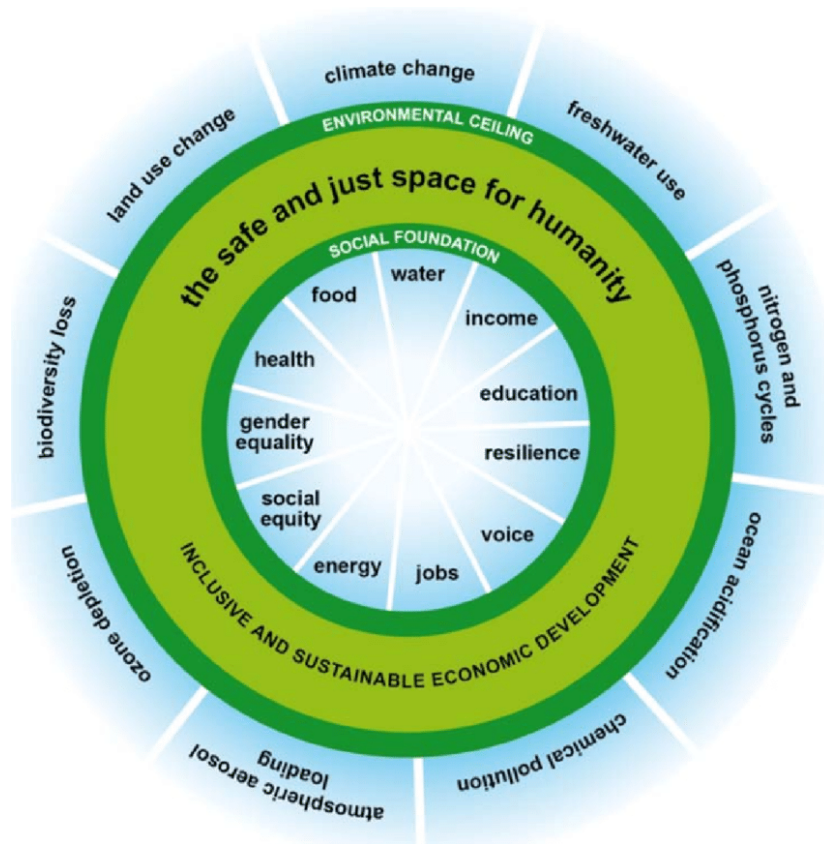
population and population change

5. Evaluate the following statements. (6 marks)

«The share of Africans living in extreme poverty has fallen substantially – from 54% in 1990 to 41% in 2015. [...] If circumstances remain the same, [...] global poverty will become increasingly African, rising from 55% in 2015 to 90% in 2030.»

(source: World Bank Group, October 9 2019)

environmental geography and sustainable development



Raworth 2012

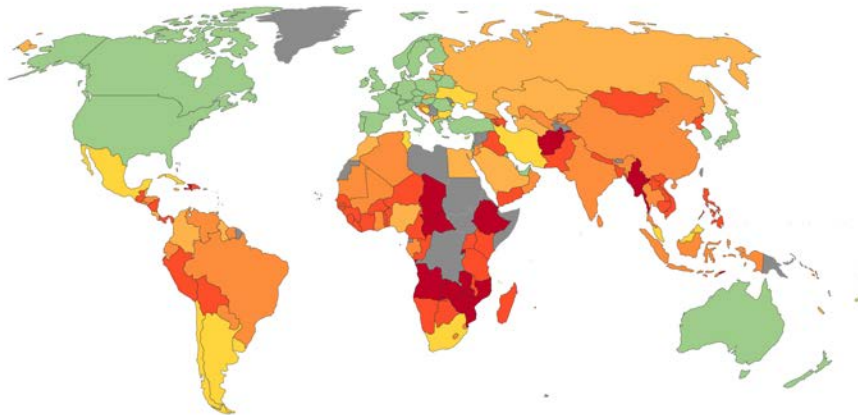
6. Explain the above figure ("doughnut economy"). (4 marks)

agricultural geography and food problems

Share of the population that is undernourished, 2000

This is the main FAO hunger indicator. It measures the share of the population that has a caloric intake which is insufficient to meet the minimum energy requirements necessary for a given individual. Countries with undernourishment under 2.5% are automatically given a value of 2.5%.

Our World
in Data



No data <2.5% 2.5% 5% 10% 20% 40% >60%

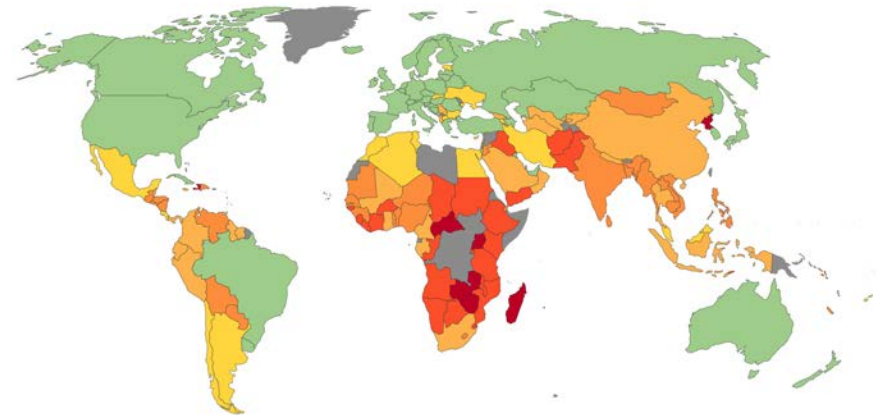
Source: UN Food and Agriculture Organization (FAO)

OurWorldInData.org/hunger-and-undernourishment/ • CC BY

Share of the population that is undernourished, 2016

This is the main FAO hunger indicator. It measures the share of the population that has a caloric intake which is insufficient to meet the minimum energy requirements necessary for a given individual. Countries with undernourishment under 2.5% are automatically given a value of 2.5%.

Our World
in Data



No data <2.5% 2.5% 5% 10% 20% 40% >60%

Source: UN Food and Agriculture Organization (FAO)

OurWorldInData.org/hunger-and-undernourishment/ • CC BY

7. Compare the situation in Africa between 2000 and 2016 considering the above maps. Give examples. (4 marks)

economic geography



Chemical industry in the area Schweizerhalle near Basel; GoogleEarth (July 1 2009).

8. Explain the benefits of four visible location factors for the chemical industry in the above satellite picture. (4 marks)

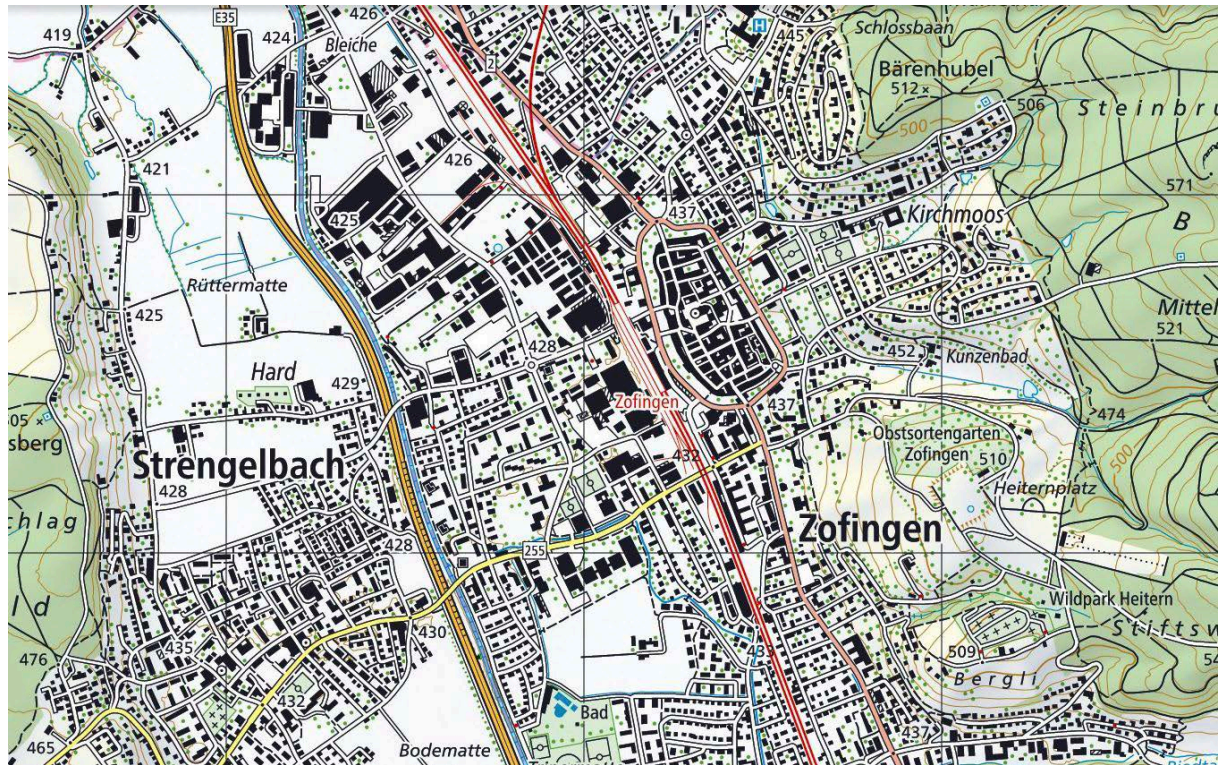
development geography and spatial inequality



9. Discuss: Is China a developing country or a developed country? (5 marks)

Total: 50 marks

urban geography, urban renewal and urban planning

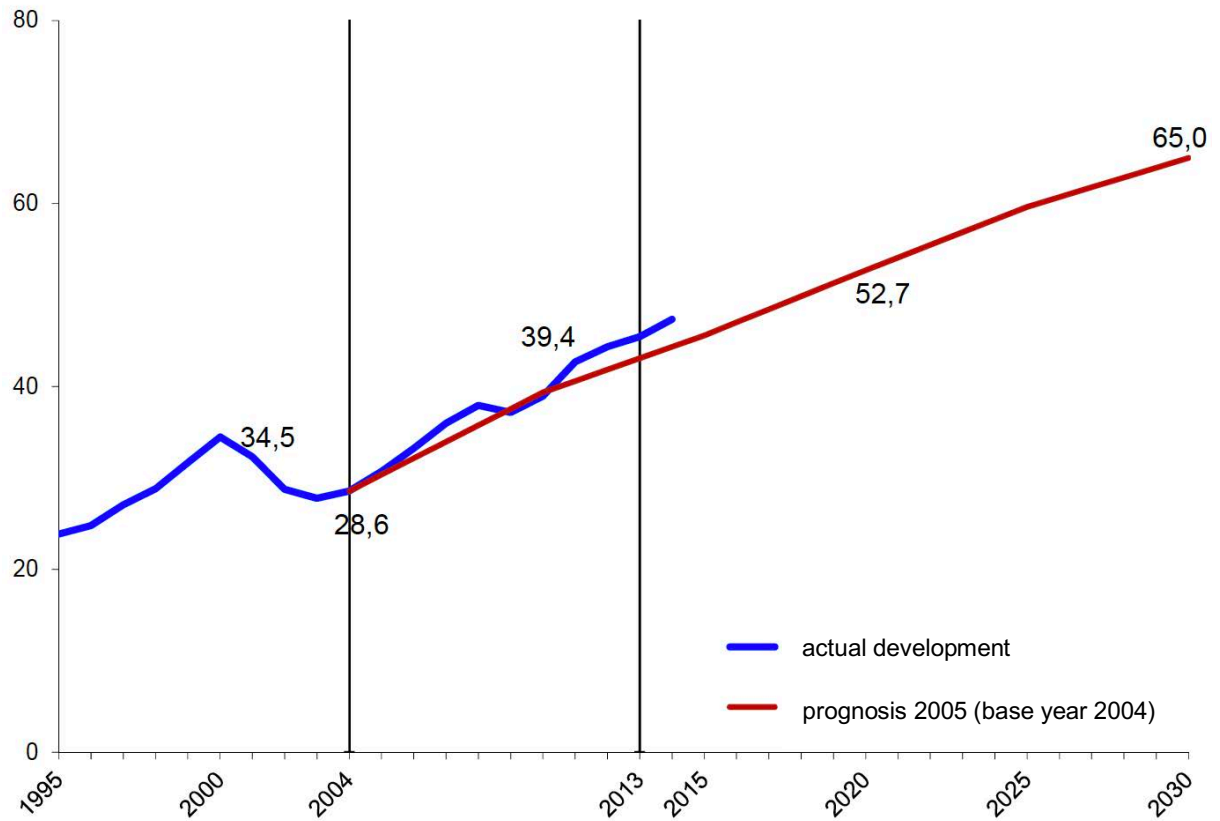


10. Highlight the area of the old town of Zofingen AG and give four reasons for your decision.
(3 marks)

Total: 50 marks

tourism and tourism management

million passengers Swiss airports total

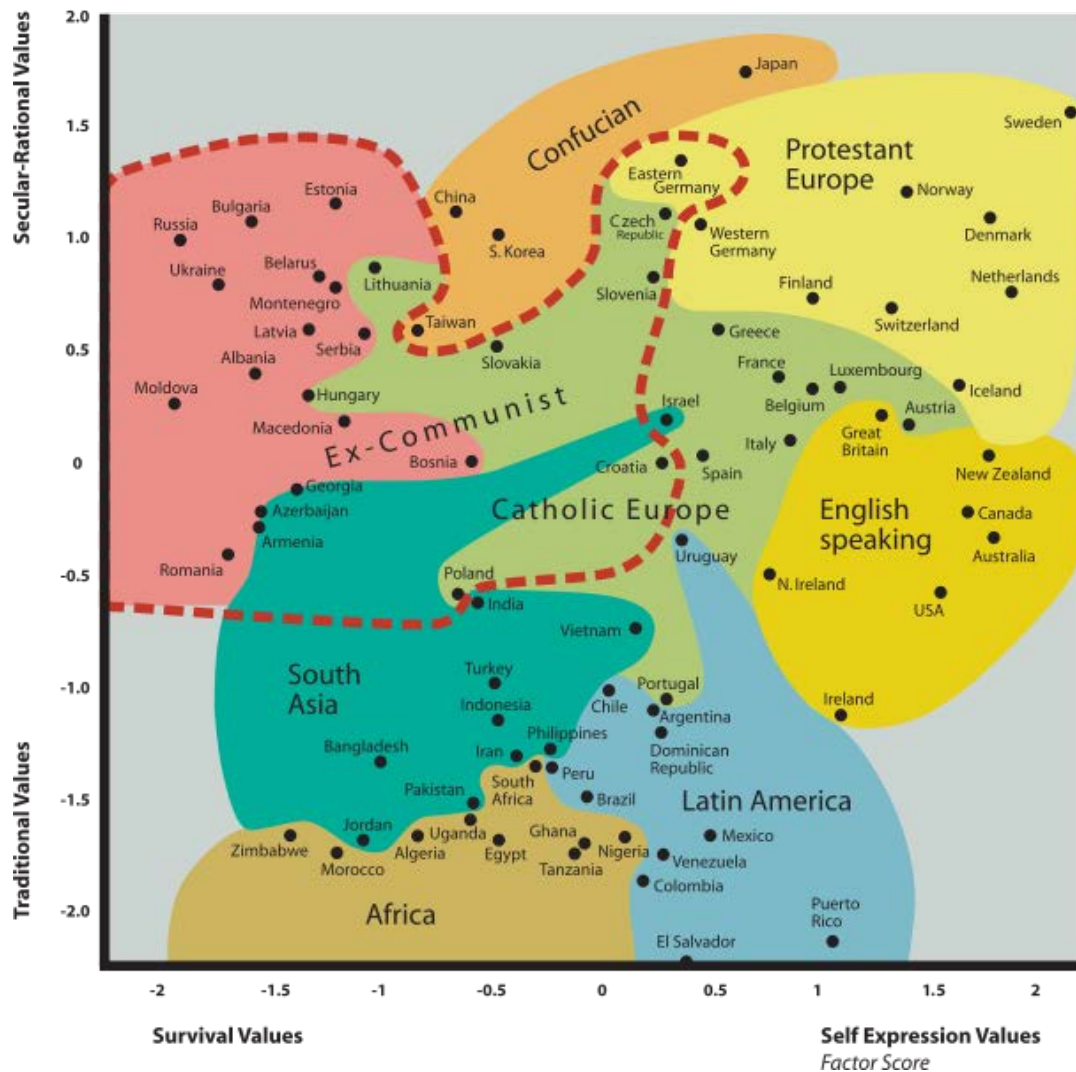


Source: BAZL 2015

11. The above graph depicts the number of passengers of all Swiss national and regional airports.

Give three possible reasons why the projected data for 2030 might be inaccurate. (3 marks)

cultural geography and regional identities



Source: https://commons.wikimedia.org/wiki/File:Inglehart_Values_Map.svg

12. Describe the values of the societies in Bulgaria and Puerto Rico considering the above graph. (4 marks)

Total: 50 marks