

1. Schweizer Finale

21. November 2015

Fieldwork Exercise

Tasks 1 and 2

*Do NOT open the booklet
before instructed to do so by a supervisor.*

Student number:

Task 1 (8 P)

Time limit: 60 minutes

Draw a map with 8 features that are typical for a topographic map and that have appeared or have disappeared in the area of the Schosshalde compared to the map of 1998.

Be as exact as possible.

The perimeter of this exercise is marked on the map below in red.



Task 2 (8P)

Time limit: 60 minutes

Calculate the actual population density of the area marked below in red.
Show your calculations.

Attention!

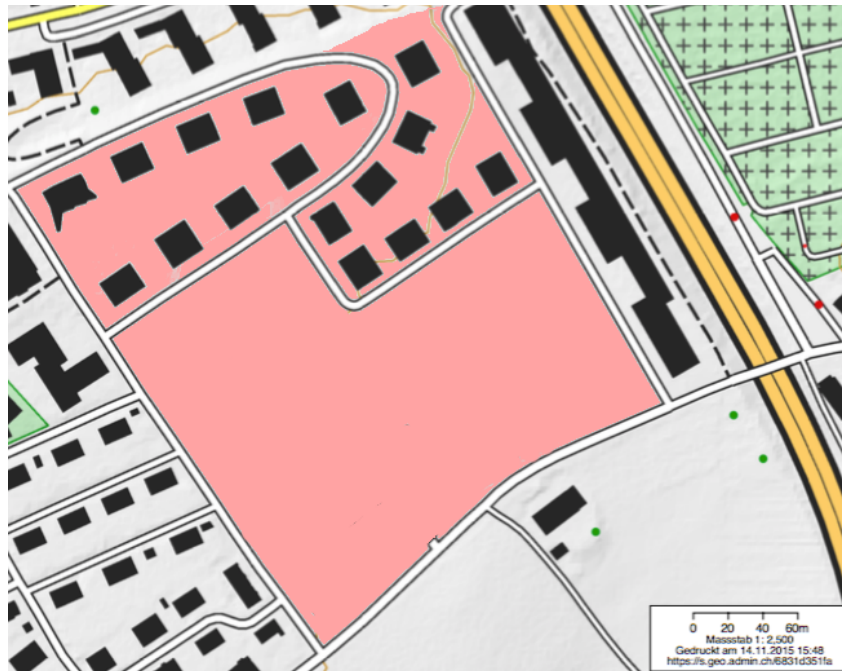
The map below does not represent the actual situation as the construction of the houses is still going on.

Attention!

Don't use the indicated scale 1:2500 on the map below!!

Hints

- Find out the number of apartments in the houses. Treat every apartment as inhabited by a family household.
- Calculate the population on the basis that the average size of a Swiss household is 2.25.
- Exclude the uninhabited houses that are still under construction and exclude communal buildings.
- Estimate the area using the map scale.



TASK 2

NOTES AND CALCULATIONS
(you must show working)

ANSWER

Density of population within the marked area

= _____ inhabitants per ha

(1 ha = 0.01 km² = 10000 m²)