



**GEOGRAPHY.
OLYMPIAD.CH**
GEOGRAPHIE-OLYMPIADE
OLYMPIADES DE GÉOGRAPHIE
OLIMPIADI DI GEOGRAFIA

4th Swiss Finals

20 october 2018

Multimedia Test

Questions Booklet

- Do NOT open the booklet before instructed to do so by a supervisor.
- Write your answers on the separate **Answer Sheet**.
- Only the answer sheet will be marked.
- Give only ONE answer to each question.

Student number:

Question 1

What type of cloud is shown in this picture?

- a) cirrocumulus**
- b) stratocumulus**
- c) nimbostratus**
- d) cirrostratus**

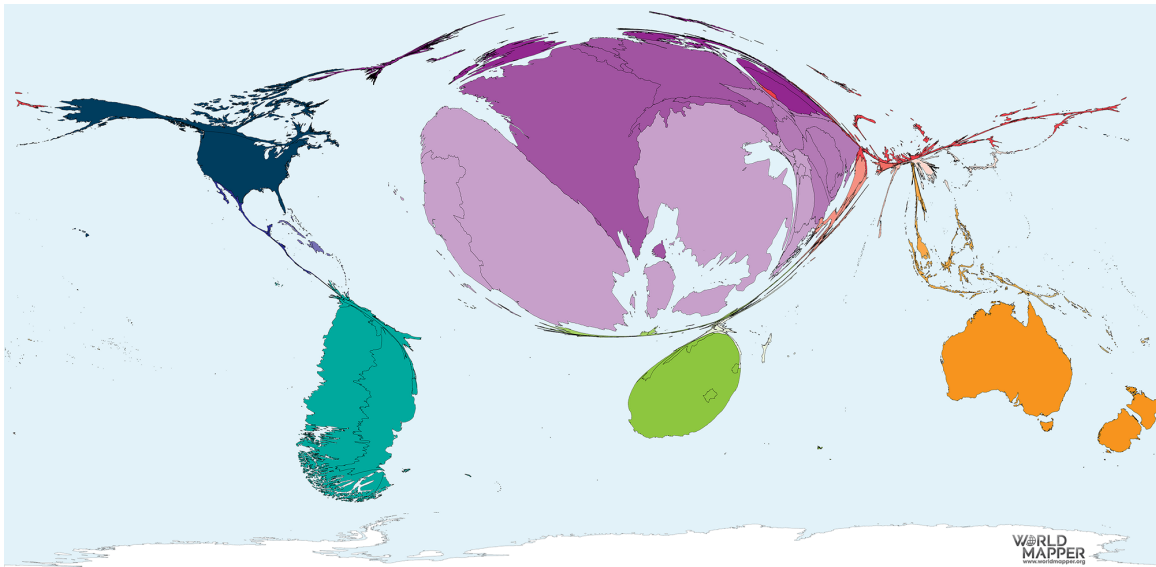


<https://tinyurl.com/ybnxcu1q>

Question 2

The map below depicts countries respective to their amount of exports of a specific good, meaning the larger a country is depicted, the more of that good it exports. Which good is used for measurement?

- a) cheese
- b) wine
- c) olives
- d) oranges

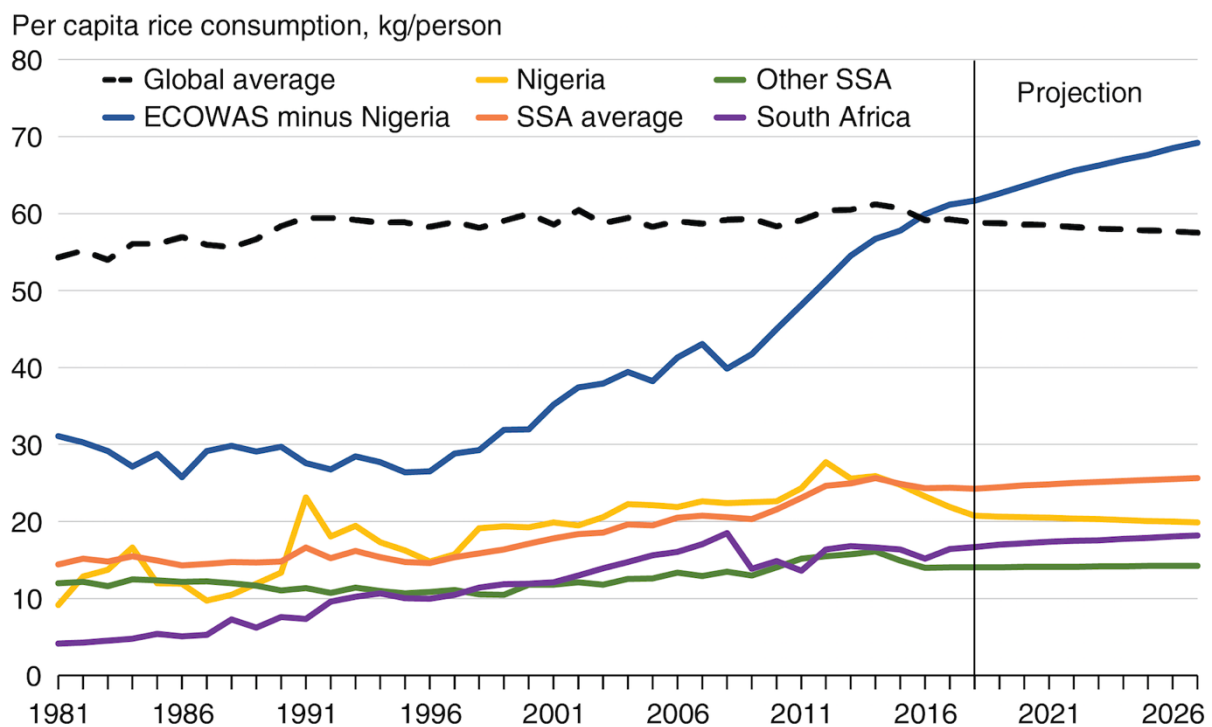


<https://tinyurl.com/y9aarlvf>

Question 3

Mark the right statement.

- a) Nigerians always consumed more rice than “Other SSA”.
- b) Average rice consumption in non-African countries increased more than in Africa.
- c) The increase in rice consumption shown in the graph is a result of population growth.
- d) South Africa has the highest relative increase from 1981 to 2026.



ECOWAS = Economic Community of West African States; ECOWAS minus Nigeria = Members of the Economic Community of West African States excluding Nigeria (Benin, Burkina Faso, Cabo Verde, Côte d'Ivoire (Ivory Coast), The Gambia, Ghana, Guinea, Guinea-Bissau, Liberia, Mali, Niger, Senegal, Sierra Leone, and Togo). SSA = Sub-Saharan Africa; Other SSA = Countries excluding ECOWAS and South Africa.
Source: USDA, Economic Research Service, agricultural baseline database.

<https://tinyurl.com/y9ngtrc7>

Question 4

If a river's course is as depicted below, the river is....

- a) swinging**
- b) winding**
- c) meandering**
- d) cutting**

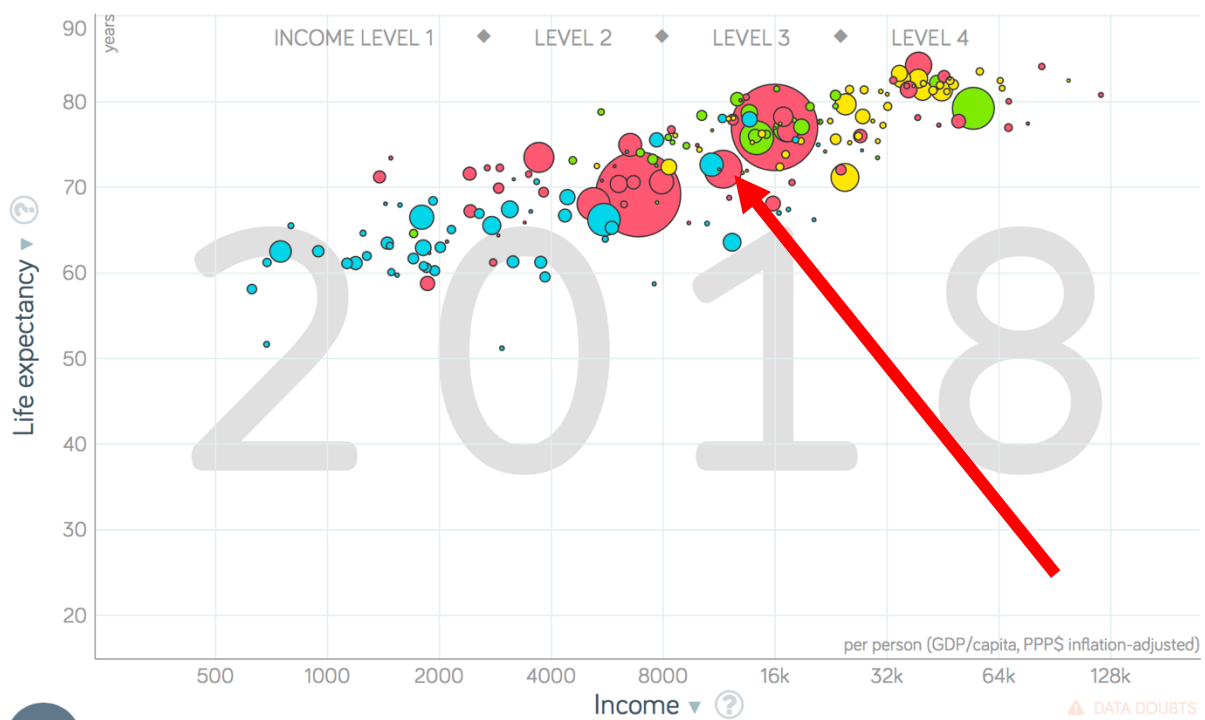


<https://tinyurl.com/yd5v7py9>

Question 5

The red bubbles represent Asian countries. What country is depicted on the arrow's tip?

- a) Indonesia
- b) South Korea
- c) Afghanistan
- d) Japan

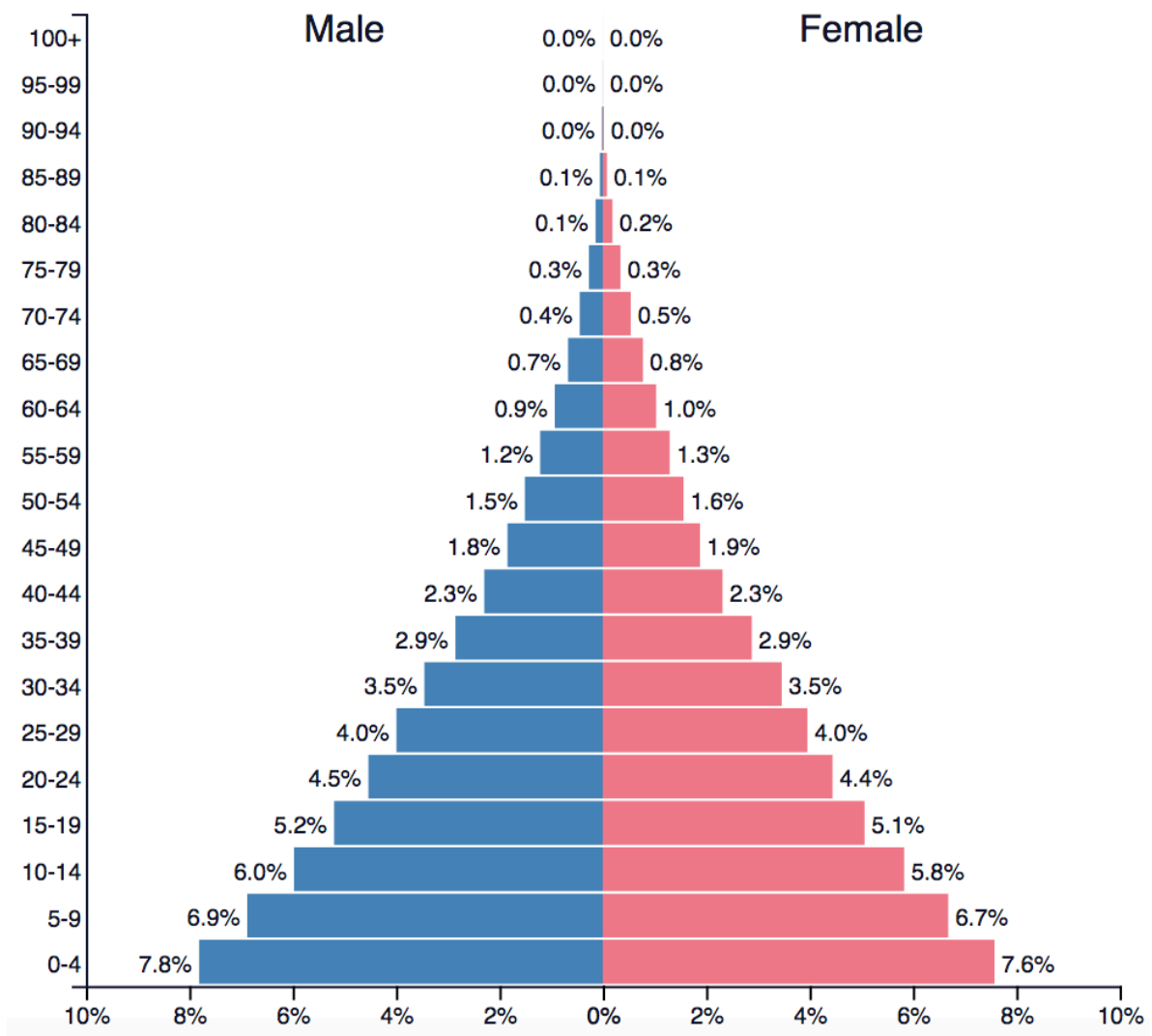


<https://tinyurl.com/y7lf2ydx>

Question 6

A population pyramid as shown in Figure 1...

- a) ...could show Europe`s population in the 1950s.
- b) ...is mainly caused by a life expectation of approximately 80 years.
- c) ...could show Africa`s population today.
- d) ...is mainly caused by a birth rate of around 2 children per woman.

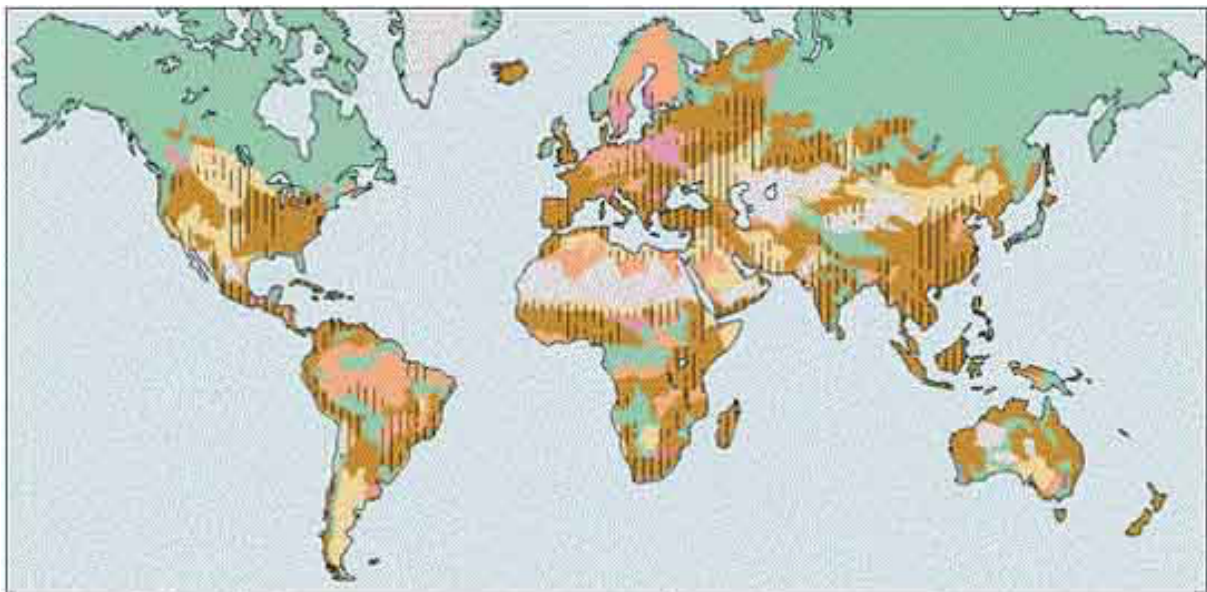


<https://tinyurl.com/y7kg2gff>

Question 7

What is the green color in the depicted map?

- a) stable terrain (no degradation)**
- b) thawing permafrost**
- c) forests**
- d) indigenous people account for more than 50% of total population**



<https://tinyurl.com/y98k2mbj>

Question 8

Which agricultural system is primarily practiced in the landscape shown in the picture below?

- a) subsistence farming**
- b) intensive farming**
- c) shifting cultivation**
- d) pastoralism**



<https://tinyurl.com/yb9sjcqz>

Question 9

The picture shows...

- a) the sustainable development goals
- b) the circle of spatial planning
- c) the geographical topics during iGeo
- d) the steps of responsible agriculture



<https://tinyurl.com/y8c8ewkt>

Question 10

Describe the weather for the eastern part of the south of France for roughly the next day.

- a) warm, thunderstorm, cooling down, heavy winds from NW
- b) rainfall, warming up, cloud-free, little wind
- c) decreasing rainfall, cooling down, cloudy, winds from S
- d) cold, heavy winds from NW, warming up, decreasing cloudy

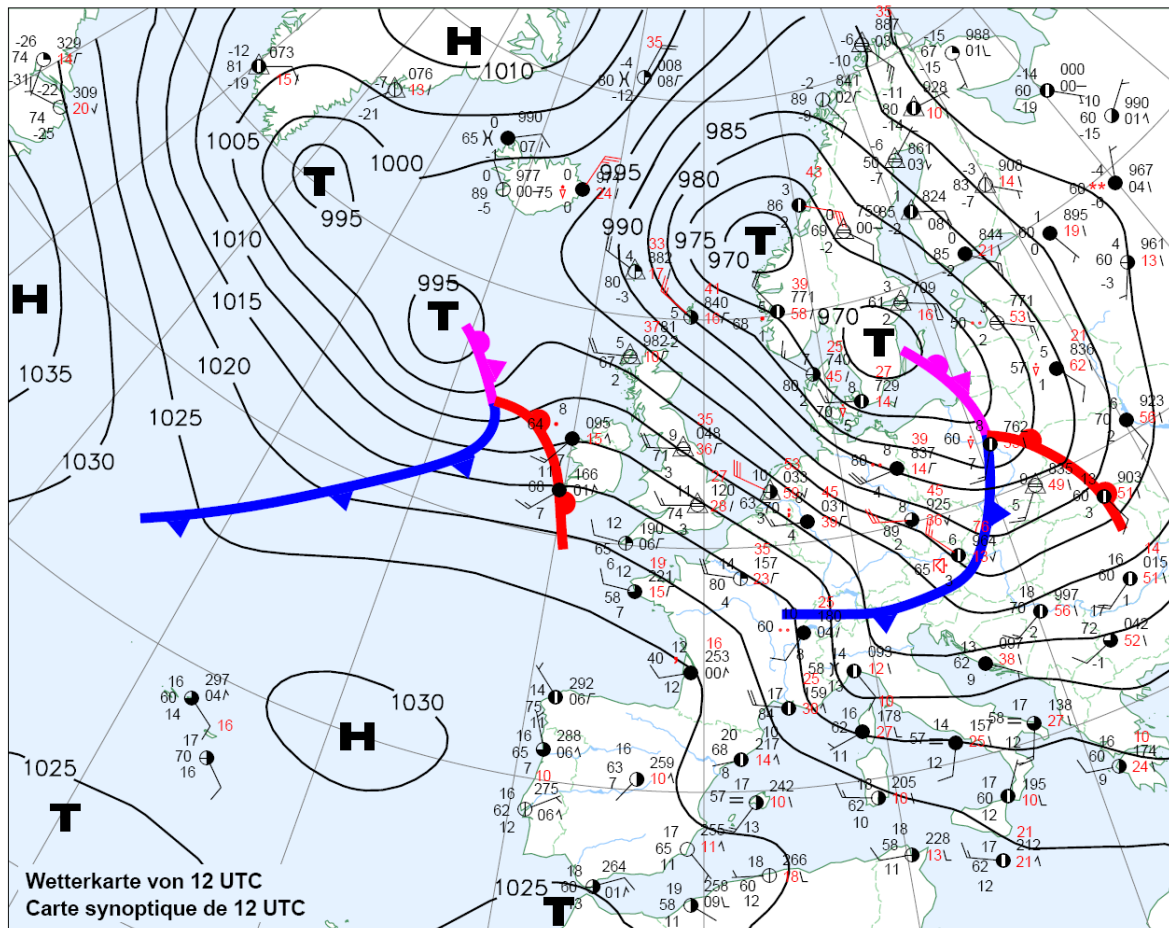
Wetterübersicht vom Samstag
Résumé météorologique du Samedi

1.3.2008



Schweizerische Eidgenossenschaft
Confédération suisse
Confederazione Svizzera
Confederaziun svizra

Eidgenössisches Departement des Innern EDI
Département fédéral de l'intérieur DFI
Bundesamt für Meteorologie und Klimatologie MétéoSuisse
Office fédéral de météorologie et de climatologie MétéoSuisse



<https://tinyurl.com/yc4zkej4>

Question 11

Figures 1 and 2 show two different volcanic phenomena. Which answer is certainly true?

- a) The highlighted material is softer than the surrounding material.**
- b) The origin of both phenomena is caused by a relatively slow cooling of magma.**
- c) These structures have no direct connection to the surrounding volcanic activities.**
- d) These structures are made of pyroclastic material.**



Fig.1: The Strombolio near Stromboli.
M. Fercher.



Fig.2: In the “valle del bove” near the main craters of Etna.
M. Fercher.

Question 12

Figure 1 shows the region north of the Salton Sea in South California. Which economic sector is not important for this region?

- a) luxury tourism
- b) fishery
- c) agriculture
- d) sports tourism

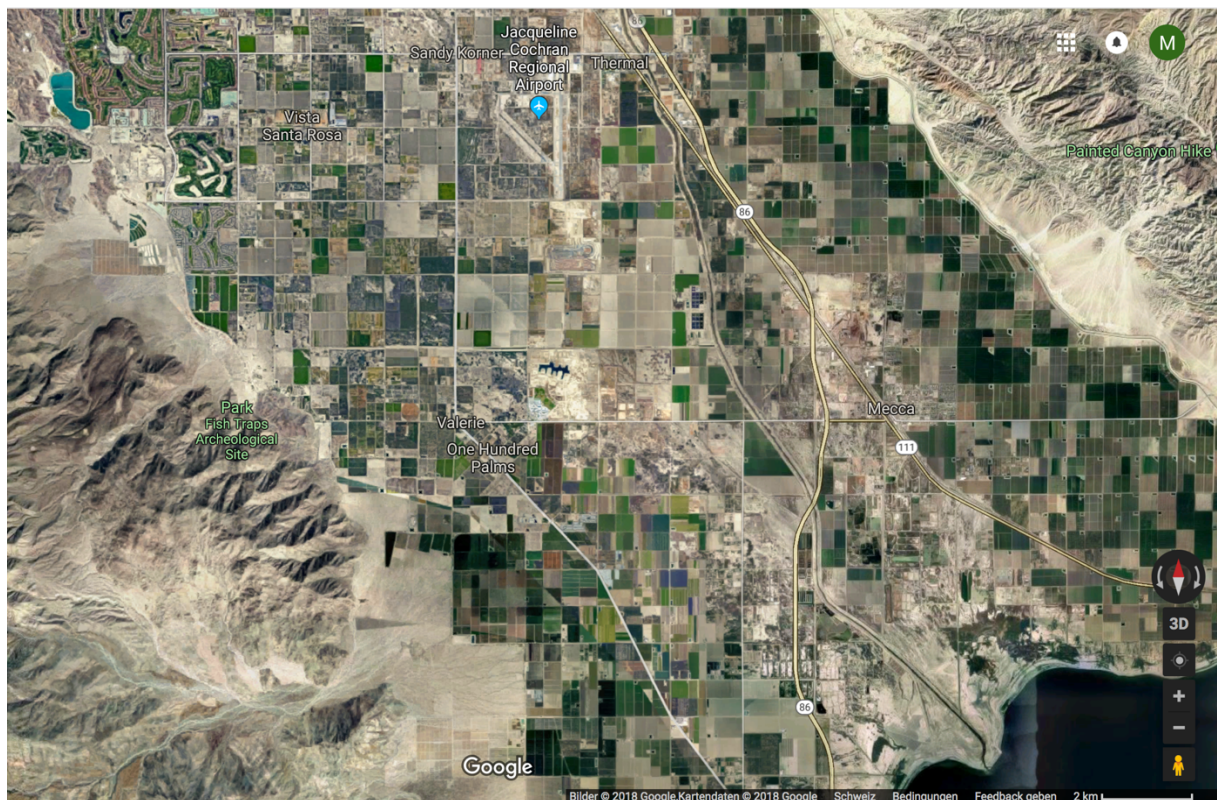


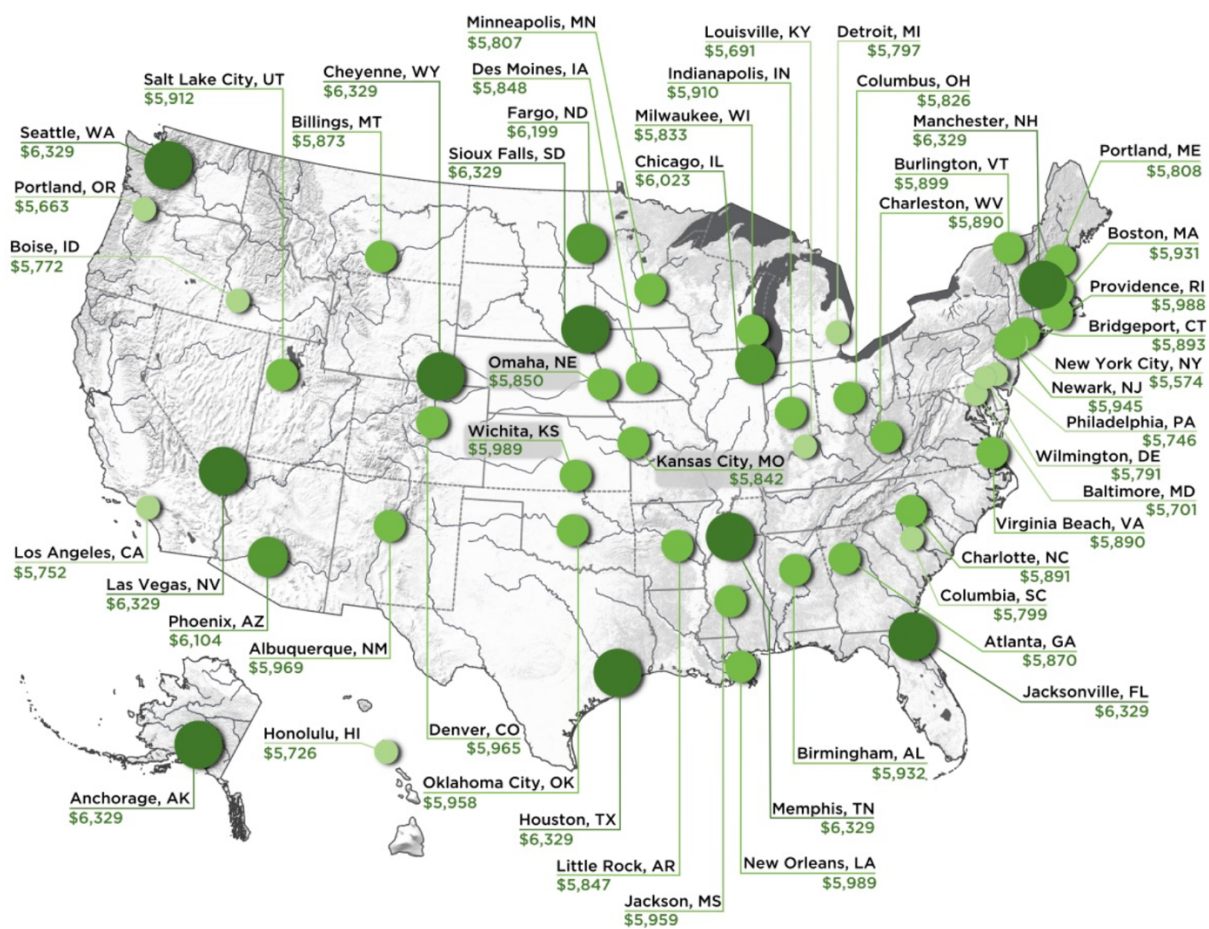
Fig.1: North coast of Salton Sea.

<https://tinyurl.com/y6u634wa>

Question 13

What do the numbers in the figure mean?

- a) Monthly take-home pay from a \$100'000 annual salary.
- b) Average monthly salary per person.
- c) Average monthly costs of living.
- d) Average tax per year.



<https://tinyurl.com/ydhfjly5>

Question 14

The map shows 4 locations marked from A to D.

Figures 1-4 show diagrams of the annual and daily temperature variation of the locations indicated on the map. Which match of location and diagram is correct?

- a) 1-B | 2-C | 3-D | 4-A
- b) 1-A | 2-D | 3-C | 4-B
- c) 1-A | 2-C | 3-D | 4-B
- d) 1-B | 2-D | 3-C | 4-A

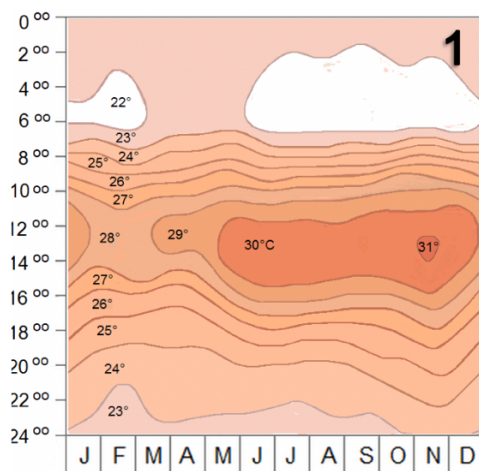


Figure 1: <https://tinyurl.com/y8juptln>

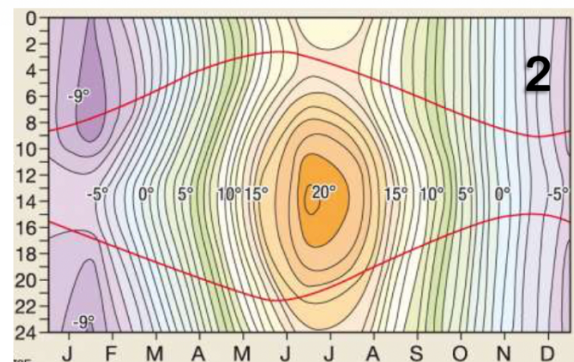


Figure 2: <https://tinyurl.com/ybfx5fa3>

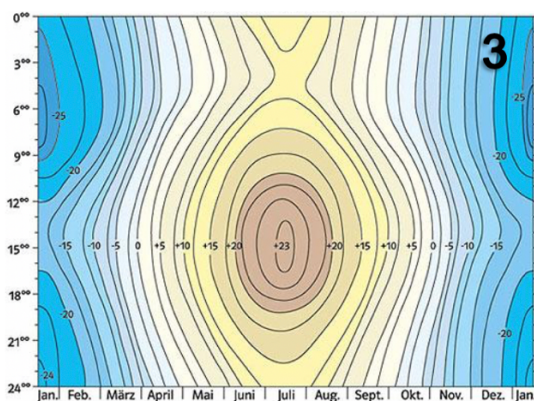


Figure 3: <https://tinyurl.com/y8eqrvsv>

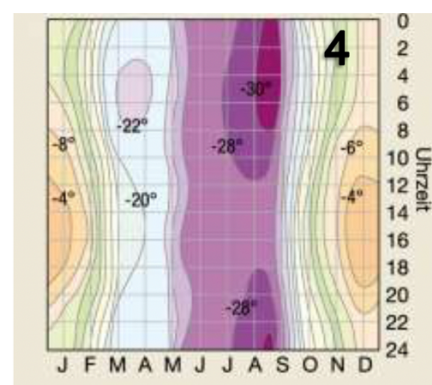


Figure 4: <https://tinyurl.com/y9l7wz4x>

Question 15

McDonalds opened their first restaurant in India in 1996. Many adjustments in the strategy were necessary in order to be successful. One of the following adjustments has been made.

- a) The restaurants are located in the centres of the cities, where the people pass by.**
- b) The beef of almost all affected products has been replaced with pork.**
- c) To address as many people as possible, McDonalds introduced two categories of products; one mainly focussing on branding, the other on quality and price.**
- d) Targeting children has been an important part of the promotion. Nevertheless, to be able to offer it cheaper, McDonalds did not include toys in the happy meals.**



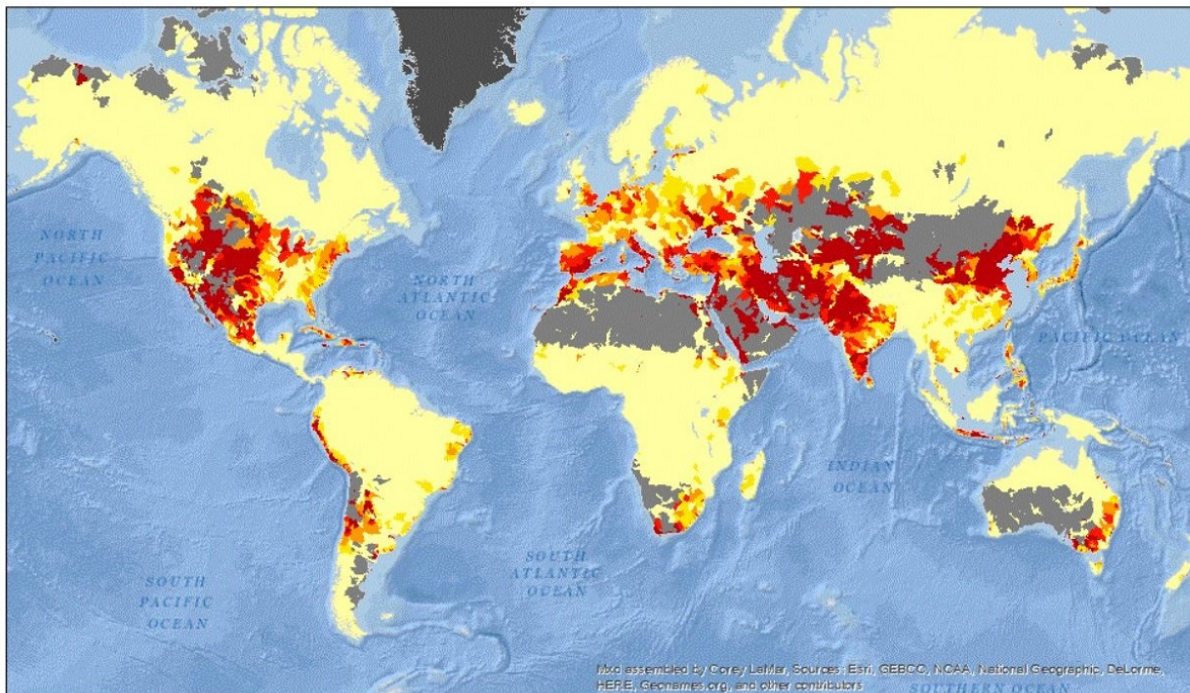
<https://tinyurl.com/yb6rndnk>

Question 16

What is shown in the map below?

(dark red: high | yellow: little | grey: no data or no importance)

- a) Intensity of agricultural production.**
- b) Dung use.**
- c) Soil erosion.**
- d) Ratio between water consumption and water supply.**



<https://tinyurl.com/ybyxzkub>